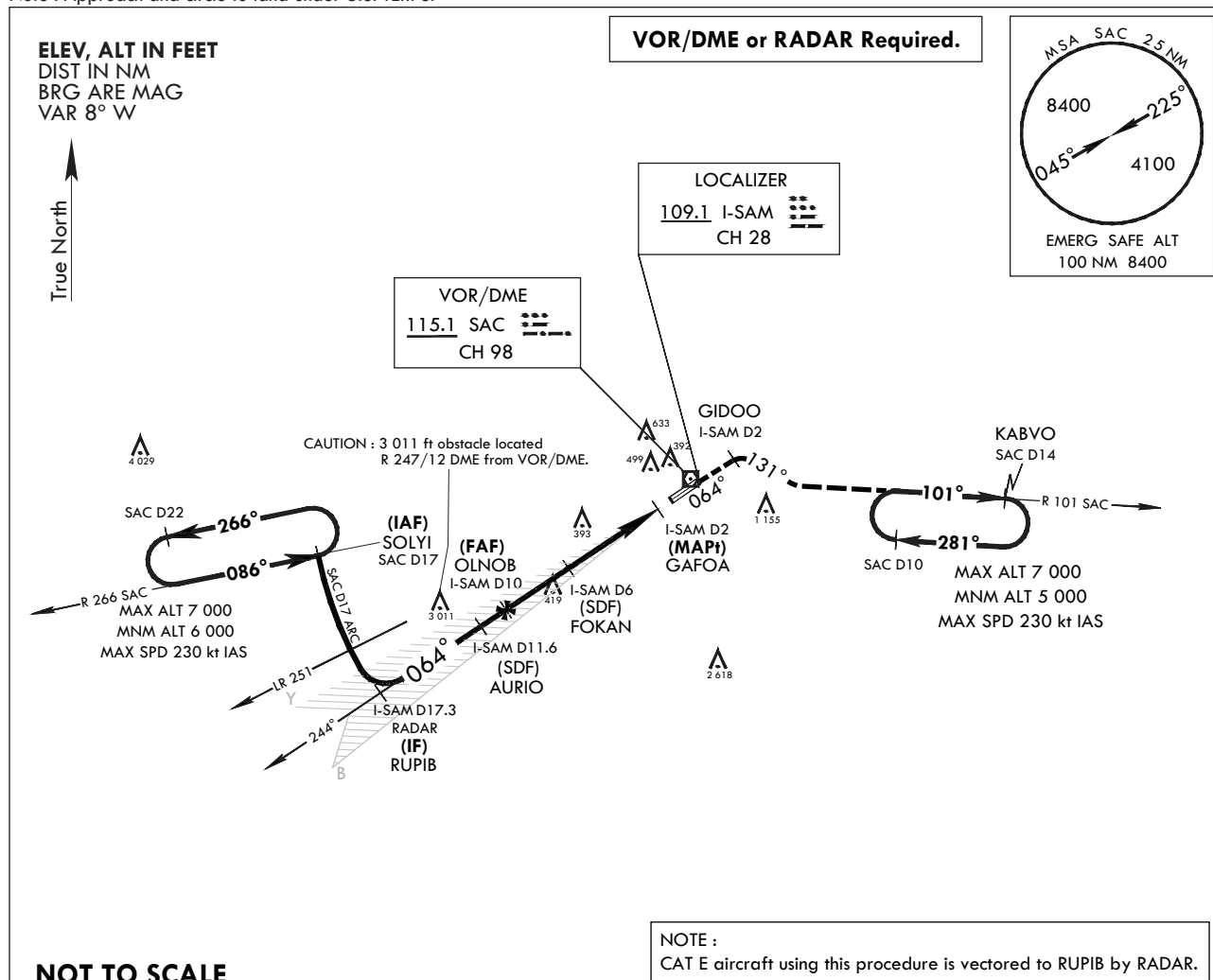
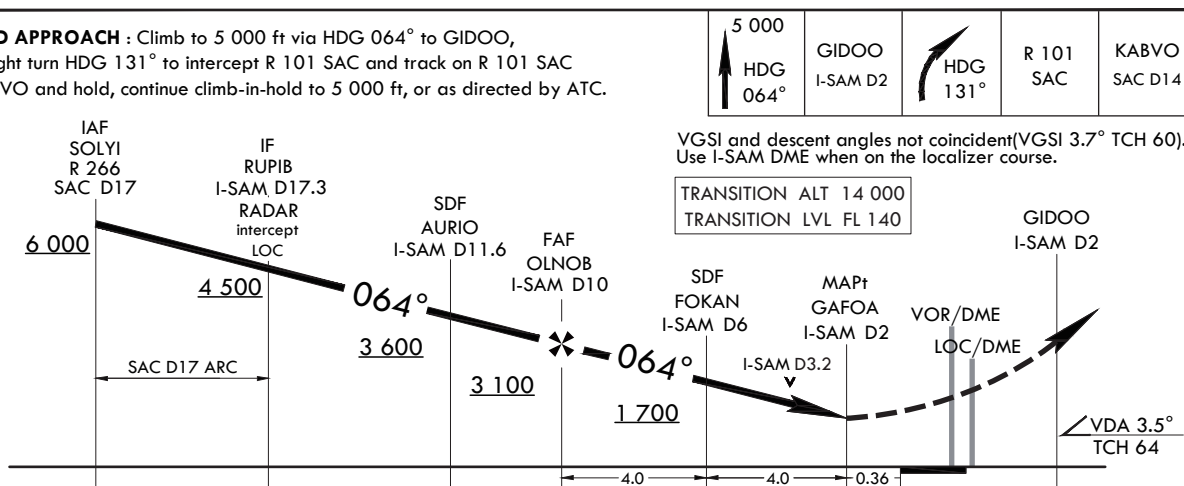


INSTRUMENT
APPROACH
CHARTAERODROME ELEV 25 ft
HEIGHTS RELATED TO
THR RWY 06L - ELEV 15 ft
HIGHEST ELEV TDZ 17 ft
Note : Approach and circle to land under U.S. TERPS.SACHEON APP 135.4 344.7
SACHEON TWR 118.675 236.6
305.4SACHEON/Sacheon(RKPS)
LOC
RWY 06L

MISSED APPROACH : Climb to 5 000 ft via HDG 064° to GIDOO,
then right turn HDG 131° to intercept R 101 SAC and track on R 101 SAC
to KABVO and hold, continue climb-in-hold to 5 000 ft, or as directed by ATC.



CATEGORY	A	B	C	D	E
S-LOC 06L *	700/40	683(700-¾)	700-1½	683(700-1½)	
CIRCLING **	800-1 775(800-1)	900-1¼ 875(900-1¼)	1 020-3	995(1 000-3)	1 120-3 1 095(1 100-3)

* When ALS INOP, increase CAT AB RVR to 55 and VIS to 1 mile, CAT CDE VIS to 2 miles.
** Circling is not authorized SE of RWY 06/24.

Change : Information of OBST and WX minima for circling CAT C, D.

OFFICE OF CIVIL AVIATION

AIRAC AIP AMDT 10/24
Effective : 1600UTC 27 NOV 2024

INTENTIONALLY

LEFT

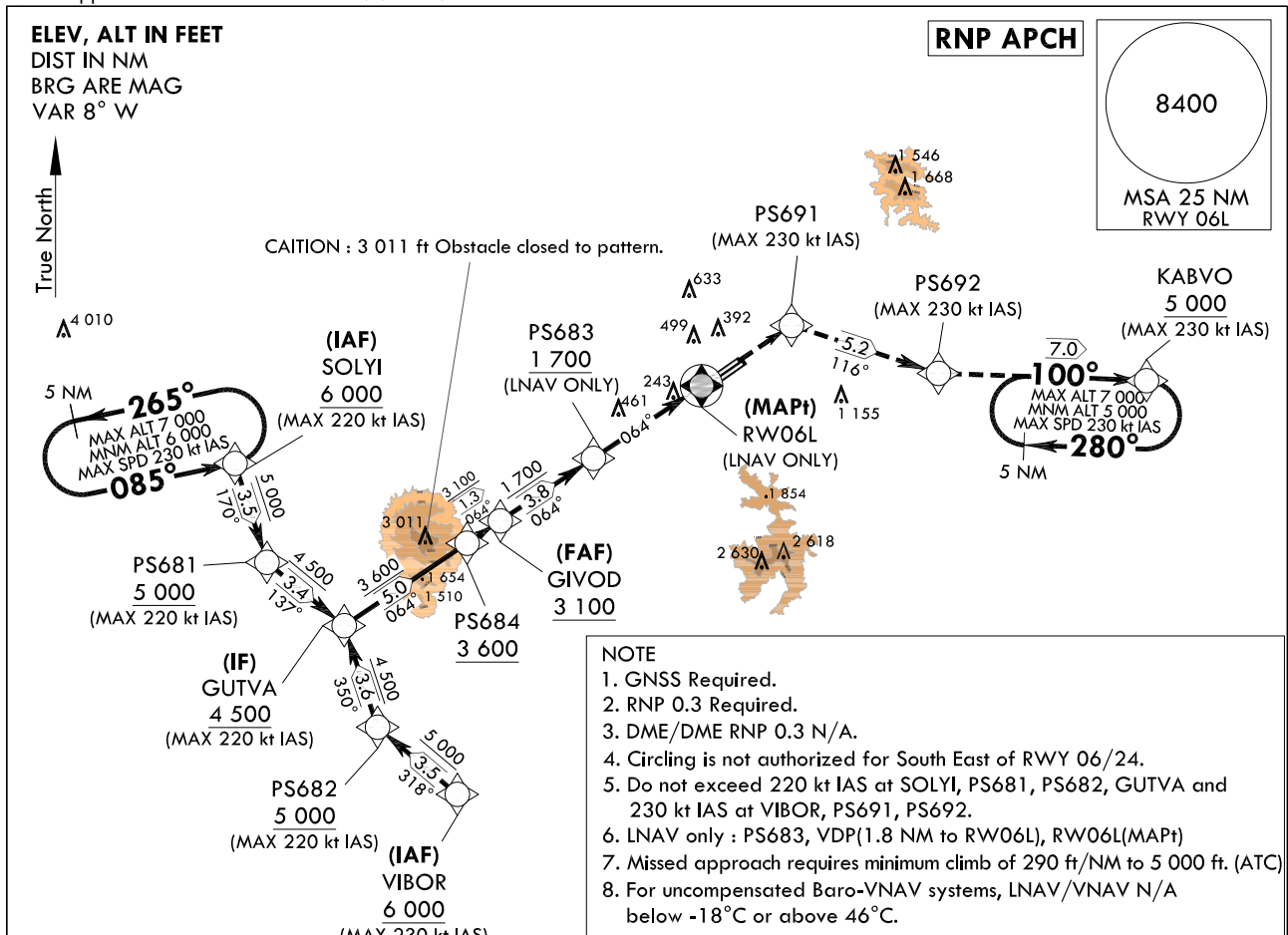
BLANK

AERODROME ELEV 25 ft
HEIGHTS RELATED TO
THR RWY 06L - ELEV 15 ft
HIGHEST ELEV TDZ 17 ft

SACHEON APP	135.4	344.7
SACHEON TWR	118.675	236.6
	305.4	

**SACHEON/Sacheon(RKPS)
RNP RWY 06L**

Note : Approach and circle to land under U.S. TERPS.



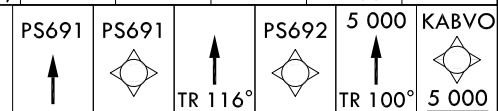
NOT TO SCALE

CAUTION - Missed Approach Climb Rate to 5 000 ft						
RWY	Knots	60	120	180	240	TO
06L	V/V(fpm)	290	580	870	1 160	5 000

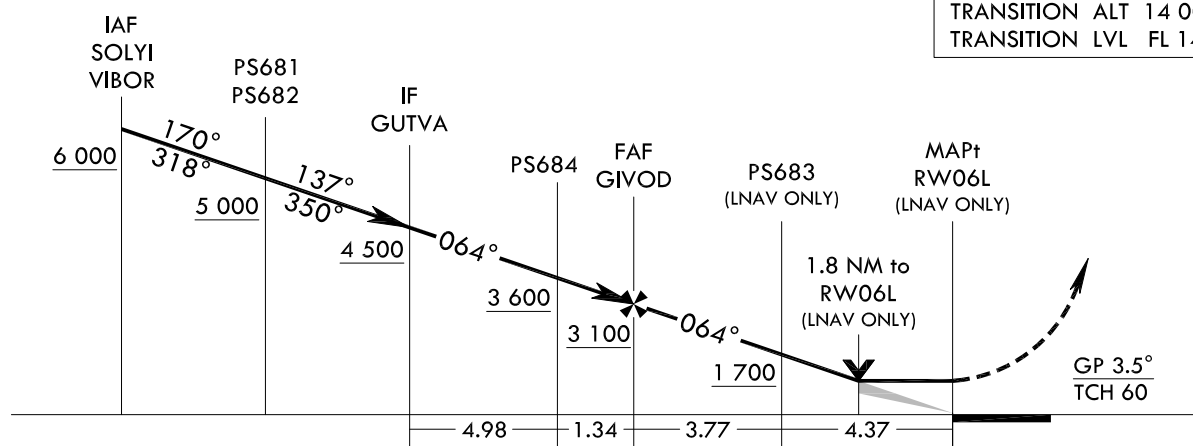
MISSED APPROACH


Climb to 5 000 ft on direct to PS691 and track 116° to PS692 and track 100° to KABVO at 5 000 ft and hold.

* VGSI and descent angles not coincident(VGSI 3.7° TCH 60).



TRANSITION	ALT	14 000
TRANSITION	LVL	FL 140



CATEGORY		A	B	C	D
S-LNAV/VNAV DA	ALS	624-1 3/8 607(600-1 3/8)			
	ALS INOP	624-1 3/4 607(600-1 3/4)			
S-LNAV MDA	ALS	780-1 3/4 763(800-1 3/4)			
	ALS INOP	780-2 1/2 763(800-2 1/2)			
 CIRCLING		780-2 1/2 755(800-2 1/2)	880-2 1/2 855(900-2 1/2)	1 020-3 995(1 000-3)	

Change : New procedure.

AERONAUTICAL DATA TABULATION

Instrument Approach Procedure Coding Tables

RNP RWY 06L - via SOLYI to GUTVA(IF)

Serial Number	Path Descriptor	Waypoint Identifier	Fly-over	Course/Track M(°T)	Distance (NM)	Turn direction	Altitude (ft)	Speed (kt)	Coordinates	VPA/ TCH	Navigation specification	Remarks
001	IF	SOLYI	-	-	-	-	+6 000	-220	35°02'09.4"N 127°44'21.6"E	-	RNP APCH	-
002	TF	PS681	-	170(161.4)	3.5	-	+5 000	-220	34°58'50.0"N 127°45'43.0"E	-	RNP APCH	SDF Bank angle 23°
003	TF	GUTVA	-	137(128.7)	3.4	-	+4 500	-220	34°56'43.9"N 127°48'54.3"E	-	RNP APCH	-

RNP RWY 06L - via VIBOR to GUTVA(IF)

Serial Number	Path Descriptor	Waypoint Identifier	Fly-over	Course/Track M(°T)	Distance (NM)	Turn direction	Altitude (ft)	Speed (kt)	Coordinates	VPA/ TCH	Navigation specification	Remarks
001	IF	VIBOR	-	-	-	-	+6 000	-230	34°51'06.1"N 127°53'36.3"E	-	RNP APCH	-
002	TF	PS682	-	318(309.5)	3.5	-	+5 000	-220	34°53'19.8"N 127°50'19.2"E	-	RNP APCH	-
003	TF	GUTVA	-	350(341.1)	3.6	-	+4 500	-220	34°56'43.9"N 127°48'54.3"E	-	RNP APCH	-

RNP RWY 06L - via GUTVA(IF) to MAHF

Serial Number	Path Descriptor	Waypoint Identifier	Fly-over	Course/Track M(°T)	Distance (NM)	Turn direction	Altitude (ft)	Speed (kt)	Coordinates	VPA/ TCH	Navigation specification	Remarks
001	TF	GUTVA	-	-	-	-	+4 500	-220	34°56'43.9"N 127°48'54.3"E	-	RNP APCH	IF
002	TF	PS684	-	064(055.4)	5.0	-	+3 600	-	34°59'33.4"N 127°53'53.5"E	-	RNP APCH	-
003	TF	GIVOD	-	064(055.5)	1.3	-	+3 100	-	35°00'19.1"N 127°55'14.3"E	-3.5/60	RNP APCH	FAF
004	TF	PS683	-	064(055.5)	3.8	-	+1 700	-	35°02'27.4"N 127°59'01.3"E	-	RNP APCH	LNAV ONLY
005	DF	RW06L	Y	064(055.5)	4.4	-	-	-	35°04'55.9"N 128°03'24.5"E	-	RNP APCH	MAPt LNAV ONLY
006	TF	PS691	-	-	-	-	-	-230	35°06'59.9"N 128°07'05.0"E	-	RNP APCH	-
007	TF	PS692	-	116(107.6)	5.2	-	-	-230	35°05'25.4"N 128°13'06.3"E	-	-	-
008	TF	KABVO	-	100(091.6)	7.0	-	+5 000	-230	35°05'13.6"N 128°21'37.6"E	-	RNP APCH	-

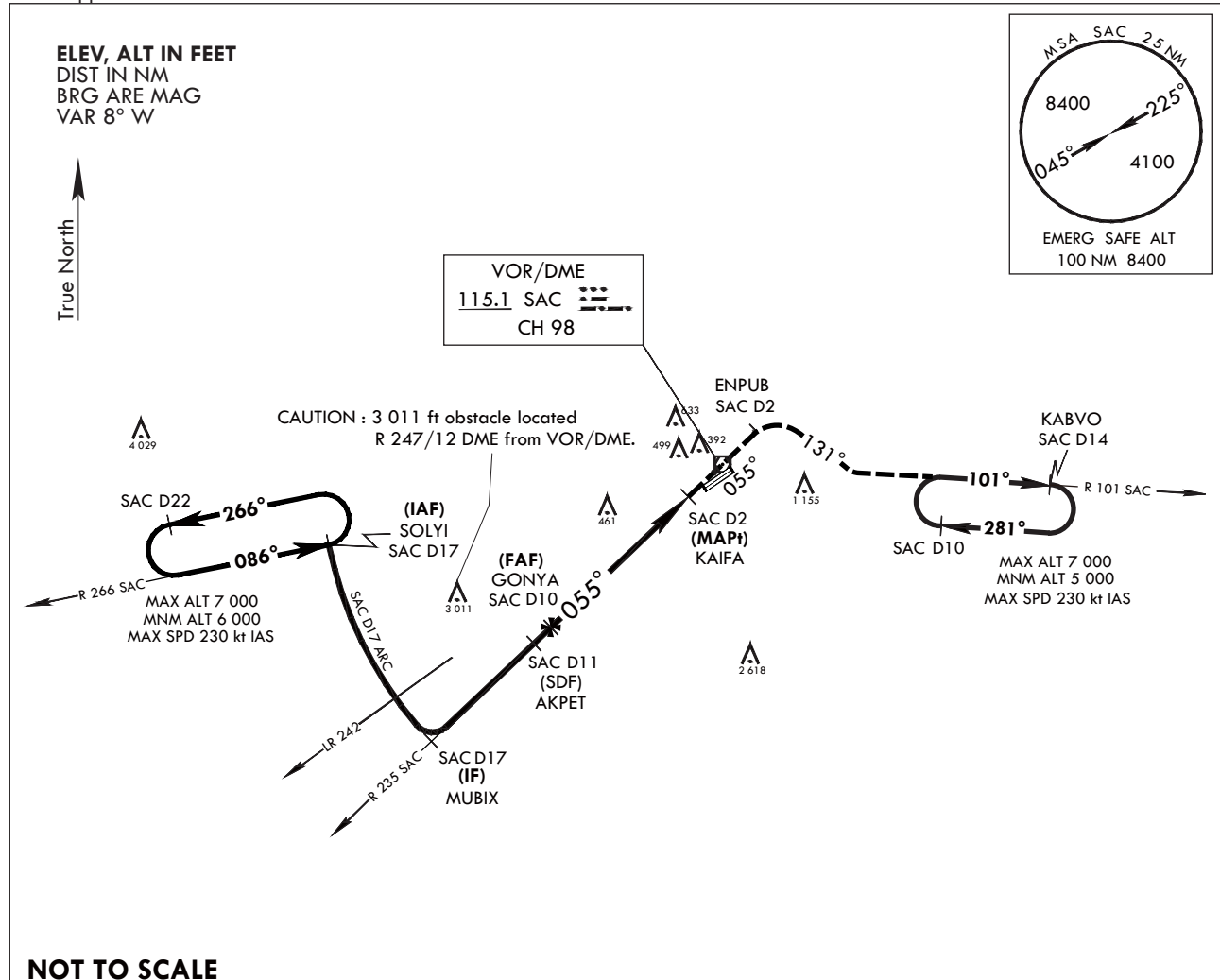
HOLDING PROCEDURE

Holding Identification	Path Descriptor	Waypoint Identifier	Fly-over	Course/Track M(°T)	Distance (NM)	Turn direction	Altitude (ft)	Speed (kt)	Coordinates	VPA/ TCH	Navigation specification	Remarks
RNP RWY 06L	HM	SOLYI	-	085(076.6)	5.0	L	-7 000 +6 000	-230	35°02'09.4"N 127°44'21.6"E	-	RNAV 1	-
	HM	KABVO	-	100(091.6)	5.0	R	-7 000 +5 000	-230	35°05'13.6"N 128°21'37.6"E	-	RNAV 1	-

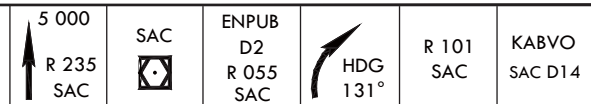
Change : New procedure.

INSTRUMENT
APPROACH
CHARTAERODROME ELEV 25 ft
HEIGHTS RELATED TO
THR RWY 06L - ELEV 15 ft
HIGHEST ELEV TDZ 17 ftSACHEON APP 135.4 344.7
SACHEON TWR 118.675 236.6
305.4SACHEON/Sacheon(RKPS)
VOR
RWY 06L

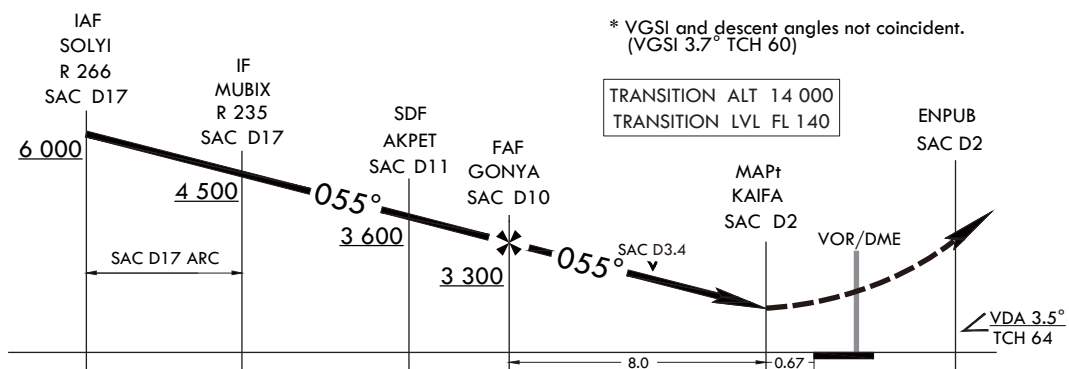
Note : Approach and circle to land under U.S. TERPS.



MISSED APPROACH : Climb to 5 000 ft via track on R 235 SAC to SAC over and track on R 055 SAC to ENPUB, HDG 131° to intercept R 101 SAC and track on R 101 SAC to KABVO and hold, continue climb-in-hold to 5 000 ft.



* VGSI and descent angles not coincident.
(VGSI 3.7° TCH 60)



CATEGORY	A	B	C	D
S-VOR 06L*	880/40	863(900-7/8)	880-2	863(900-2)
CIRCLING**	880-1 1/4 855(900-1 1/4)	900-1 1/4 875(900-1 1/4)	1 020-3	995(1 000-3)

* When ALS INOP, increase CAT A RVR to 55 and VIS to 1 mile, CAT B RVR to 60 and VIS to 1 1/4 miles, CAT CD VIS to 2 1/2 miles.

** Circling is not authorized SE of RWY 06/24.

Change : Information of OBST and WX minima for circling CAT C, D.

INTENTIONALLY

LEFT

BLANK

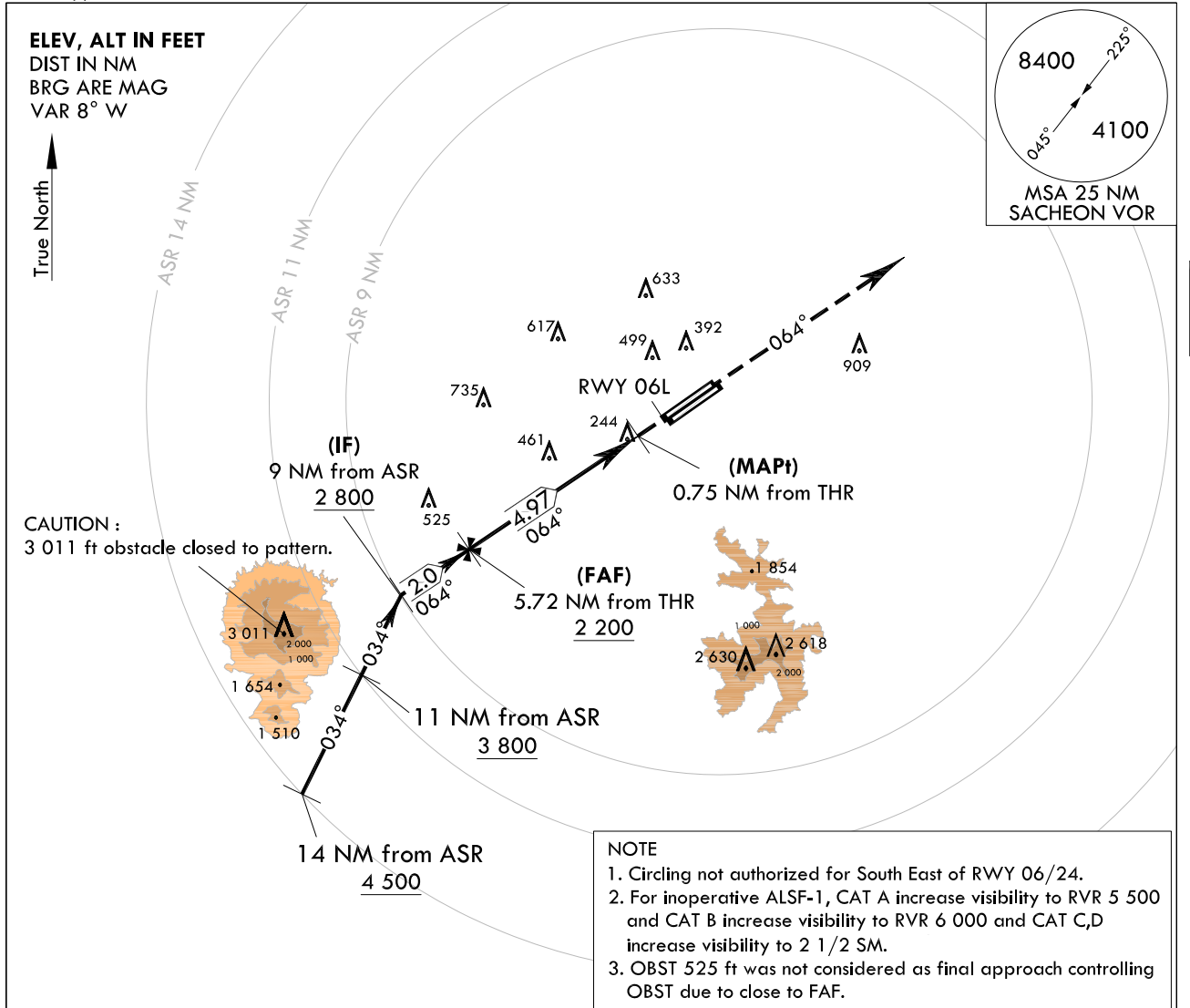
**INSTRUMENT
APPROACH
CHART**

AERODROME ELEV 25 ft
HEIGHTS RELATED TO
THR RWY 06L - ELEV 15 ft
HIGHEST ELEV TDZ 17 ft

SACHEON APP 135.4 344.7
SACHEON TWR 118.675 236.6
305.4

SACHEON/Sacheon(RKPS)
ASR
RWY 06L

Note : Approach and circle to land under U.S. TERPS.



NOT TO SCALE

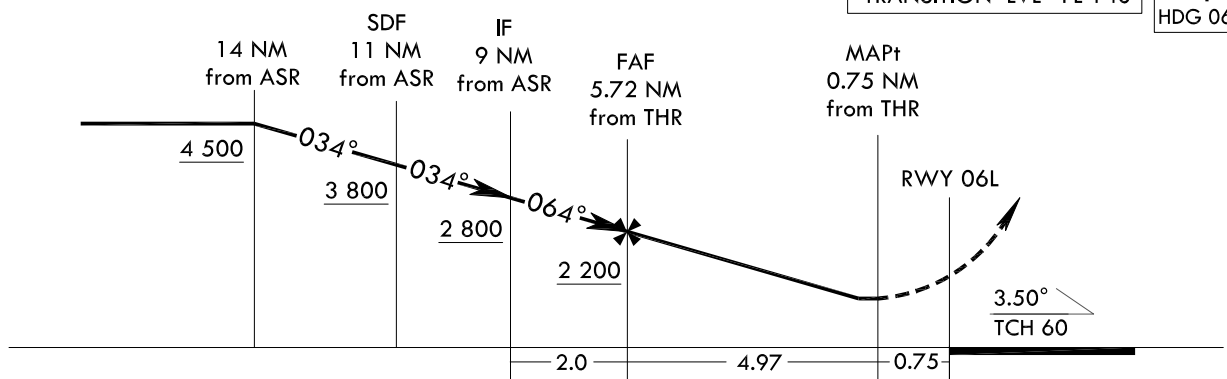
Recommended altitudes(RecAlt) on final approach				
5.72 NM(FAF)	5 NM	4 NM	3 NM	2 NM
2 200	1 940	1 560	1 180	820

MISSED APPROACH

Climb HDG 064° to 4 400 ft, then expect radar vector by ATC.

TRANSITION ALT 14 000
TRANSITION LVL FL 140

4 400
↑
HDG 064°



CATEGORY	A	B	C	D	E
S-ASR 06L	780/40	763(800-3/4)	780-1 3/4	763(800-1 3/4)	
CIRCLING	800-1 775(800-1)	900-1 1/4 875(900-1 1/4)	1 020-3	995(1 000-3)	1 120-3 1 095(1 100-3)

Change : Information of OBST and WX minima for circling CAT C, D.

INTENTIONALLY

LEFT

BLANK

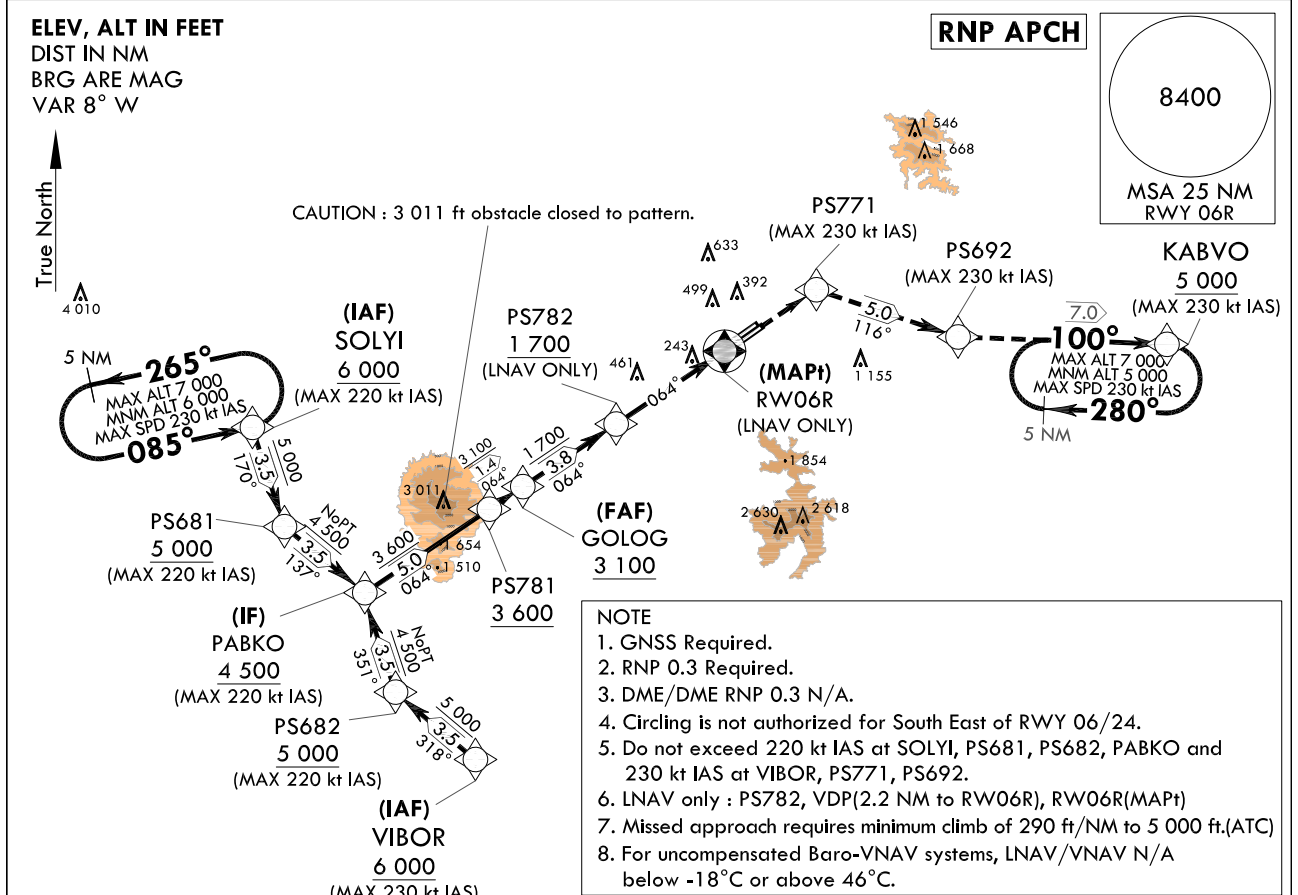
**INSTRUMENT
APPROACH
CHART**

AERODROME ELEV 25 ft
HEIGHTS RELATED TO
THR RWY 06R - ELEV 16 ft
HIGHEST ELEV TDZ 19 ft

SACHEON APP 135.4 344.7
SACHEON TWR 118.675 236.6
305.4

SACHEON/Sacheon(RKPS)
RNP
RWY 06R

Note : Approach and circle to land under U.S. TERPS.



NOT TO SCALE

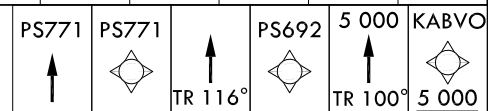
CAUTION - Missed Approach Climb Rate

RWY	Knots	60	120	180	240	TO
06R	V/V(fpm)	290	580	870	1 160	5 000

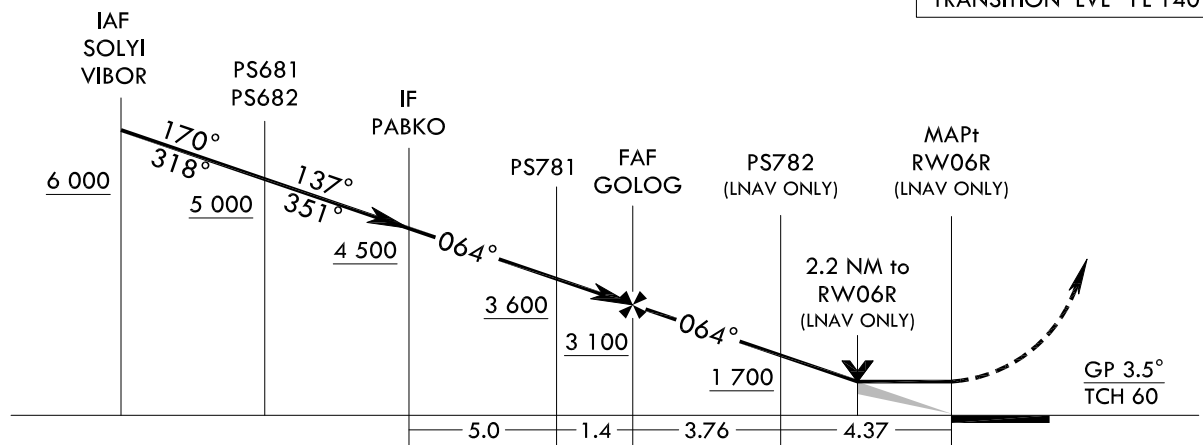
MISSED APPROACH

Climb to 5 000 ft on direct to PS771 and track 116° to PS692 and track 100° to KABVO at 5 000 ft and hold.

* VGSI and descent angles not coincident (VGSI 3.0° TCH 53).



TRANSITION ALT 14 000
TRANSITION LVL FL 140



CATEGORY		A	B	C	D
S-LNAV/VNAV DA	ALS	624-1 3/8 605(600-1 3/8)			
	ALS INOP	624-1 3/4 605(600-1 3/4)			
S-LNAV MDA	ALS	780-1 3/4 761(800-1 3/4)			
	ALS INOP	780-2 1/2 761(800-2 1/2)			
CIRCLING		780-2 1/2 755(800-2 1/2)	880-2 1/2 855(900-2 1/2)	1 020-3 995(1 000-3)	

Change : Page control.

AERONAUTICAL DATA TABULATION

Instrument Approach Procedure Coding Tables

RNP RWY 06R - via SOLYI to PABKO(IF)

Serial Number	Path Descriptor	Waypoint Identifier	Fly-over	Course/Track M(°T)	Distance (NM)	Turn direction	Altitude (ft)	Speed (kt)	Coordinates	VPA/ TCH	Navigation specification	Remarks
001	IF	SOLYI	-	-	-	-	+6 000	-220	35°02'09.4"N 127°44'21.6"E	-	RNP APCH	-
002	TF	PS681	-	170(161.4)	3.5	-	+5 000	-220	34°58'50.0"N 127°45'43.0"E	-	RNP APCH	SDF Bank angle 23°
003	TF	PABKO	-	137(128.7)	3.5	-	+4 500	-220	34°56'39.1"N 127°49'01.5"E	-	RNP APCH	NoPT

RNP RWY 06R - via VIBOR to PABKO(IF)

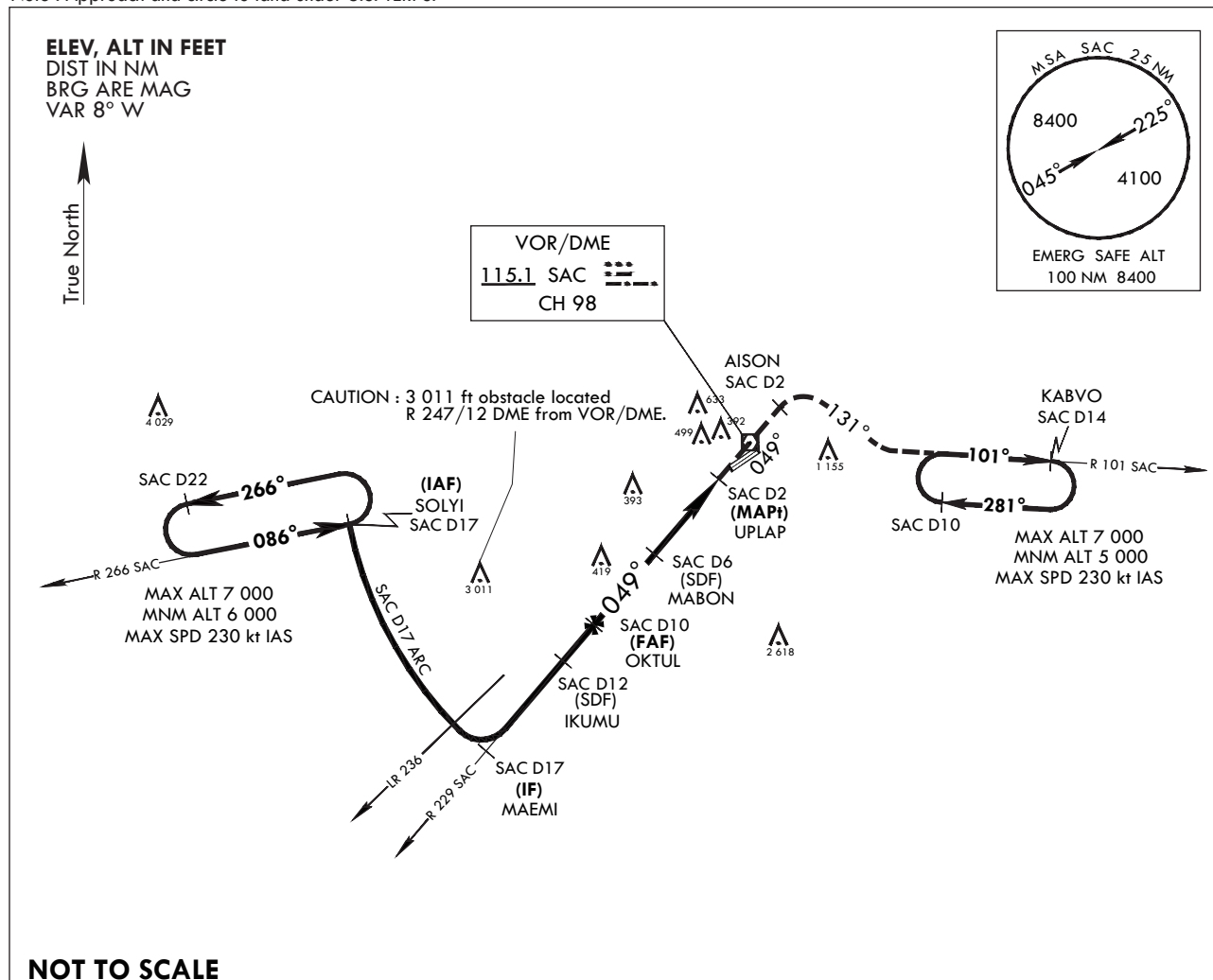
Serial Number	Path Descriptor	Waypoint Identifier	Fly-over	Course/Track M(°T)	Distance (NM)	Turn direction	Altitude (ft)	Speed (kt)	Coordinates	VPA/ TCH	Navigation specification	Remarks
001	IF	VIBOR	-	-	-	-	+6 000	-230	34°51'06.1"N 127°53'36.3"E	-	RNP APCH	-
002	TF	PS682	-	318(309.5)	3.5	-	+5 000	-220	34°53'19.8"N 127°50'19.2"E	-	RNP APCH	-
003	TF	PABKO	-	351(342.2)	3.5	-	+4 500	-220	34°56'39.1"N 127°49'01.5"E	-	RNP APCH	NoPT

RNP RWY 06R - via PABKO(IF) to MAHF

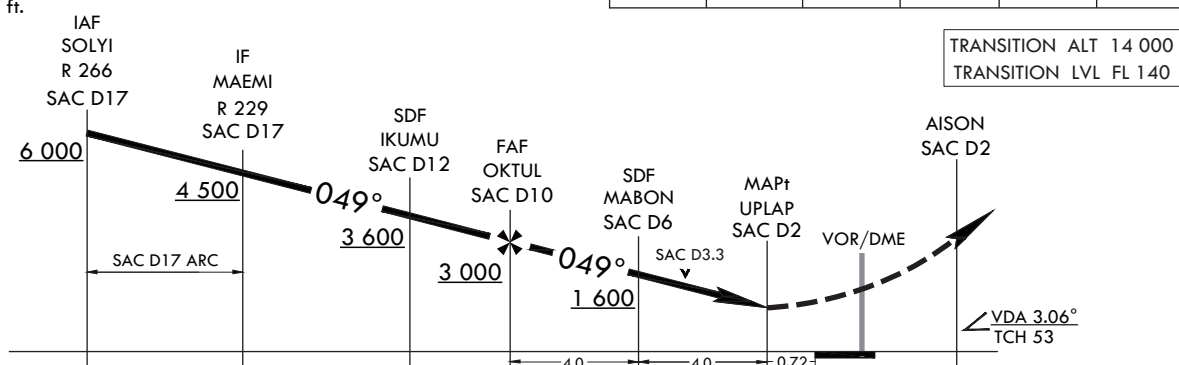
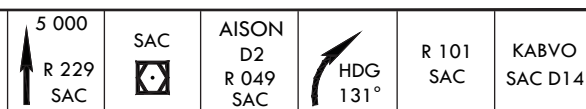
Serial Number	Path Descriptor	Waypoint Identifier	Fly-over	Course/Track M(°T)	Distance (NM)	Turn direction	Altitude (ft)	Speed (kt)	Coordinates	VPA/ TCH	Navigation specification	Remarks
001	TF	PABKO	-	-	-	-	+4 500	-220	34°56'39.1"N 127°49'01.5"E	-	RNP APCH	IF
002	TF	PS781	-	064(055.4)	5.02	-	+3 600	-	34°59'30.2"N 127°54'03.5"E	-	RNP APCH	-
003	TF	GOLOG	-	064(055.5)	1.35	-	+3 100	-	35°00'16.1"N 127°55'24.65"E	-3.5/60	RNP APCH	FAF
004	TF	PS782	-	064(055.5)	3.76	-	+1 700	-	35°02'24.1"N 127°59'11.3"E	-	RNP APCH	LNAV ONLY
005	DF	RW06R	Y	064(055.6)	4.37	-	-	-	35°04'52.6"N 128°03'34.9"E	-	RNP APCH	MAHF LNAV ONLY
006	TF	PS771	-	064(055.6)	-	-	-	-230	35°06'58.3"N 128°07'18.2"E	-	RNP APCH	-
007	TF	PS692	-	116(108.0)	5.01	-	-	-230	35°05'25.4"N 128°13'06.3"E	-	-	-
008	TF	KABVO	-	100(091.6)	7.00	-	+5 000	-230	35°05'13.6"N 128°21'37.6"E	-	RNP APCH	-

HOLDING PROCEDURE

Holding Identification	Path Descriptor	Waypoint Identifier	Fly-over	Course/Track M(°T)	Distance (NM)	Turn direction	Altitude (ft)	Speed (kt)	Coordinates	VPA/ TCH	Navigation specification	Remarks
RNP RWY 06R	HM	SOLYI	-	085(076.6)	5.0	L	-7 000 +6 000	-230	35°02'09.4"N 127°44'21.6"E	-	RNAV 1	-
	HM	KABVO	-	100(091.6)	5.0	R	-7 000 +5 000	-230	35°05'13.6"N 128°21'37.6"E	-	RNAV 1	-

INSTRUMENT
APPROACH
CHARTAERODROME ELEV 25 ft
HEIGHTS RELATED TO
THR RWY 06R - ELEV 16 ft
HIGHEST ELEV TDZ ft
Note : Approach and circle to land under U.S. TERPS.SACHEON APP 135.4 344.7
SACHEON TWR 118.675 236.6
305.4SACHEON/Sacheon(RKPS)
VOR
RWY 06R

MISSED APPROACH : Climb to 5 000 ft via track on R 229 SAC to SAC over and track on R 049 SAC to AISON, then right turn HDG 131° to intercept R 101 SAC and track on R 101 SAC to KABVO and hold, continue climb-in-hold to 5 000 ft.



CATEGORY	A	B	C	D
S-VOR 06R*	700/40	681(700- $\frac{7}{8}$)	700-1½	681(700-1½)
CIRCLING**	800-1 755(800-1)	900-1¼ 875(900-1¼)	1 020-3	995(1 000-3)

* When ALS INOP, increase CAT AB RVR to 55 and VIS to 1 mile, CAT CD VIS to 2 miles.

** Circling is not authorized SE of RWY 06/24.

Change : Information of OBST and WX minima for circling CAT C, D.

OFFICE OF CIVIL AVIATION

AIRAC AIP AMDT 10/24
Effective : 1600UTC 27 NOV 2024

INTENTIONALLY

LEFT

BLANK

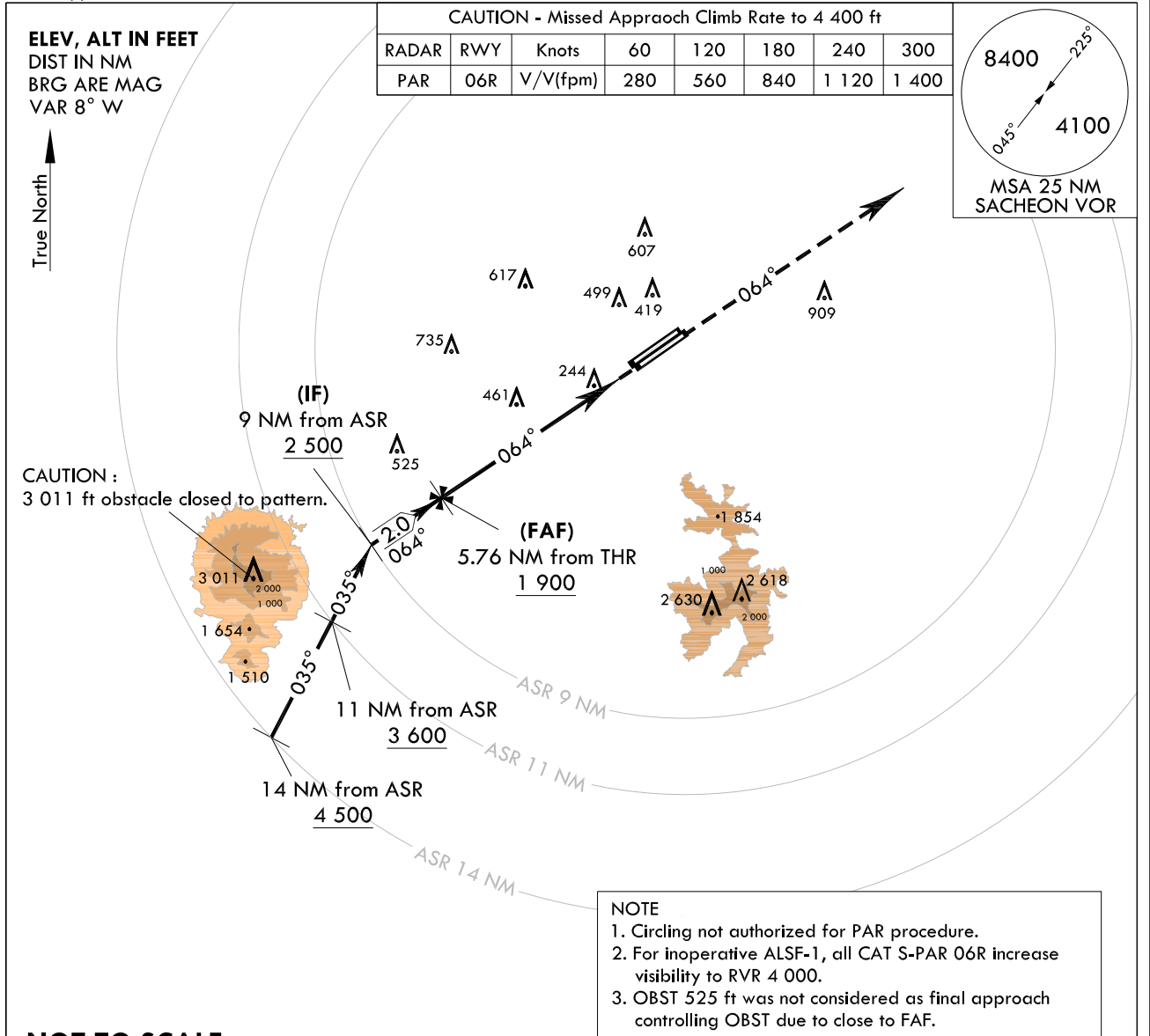
**INSTRUMENT
APPROACH
CHART**

AERODROME ELEV 25 ft
HEIGHTS RELATED TO
THR RWY 06R - ELEV 16 ft
HIGHEST ELEV TDZ 19 ft

SACHEON APP 135.4 344.7
SACHEON TWR 118.675 236.6
305.4

SACHEON/Sacheon(RKPS)
PAR
RWY 06R

Note : Approach and circle to land under U.S. TERPS.

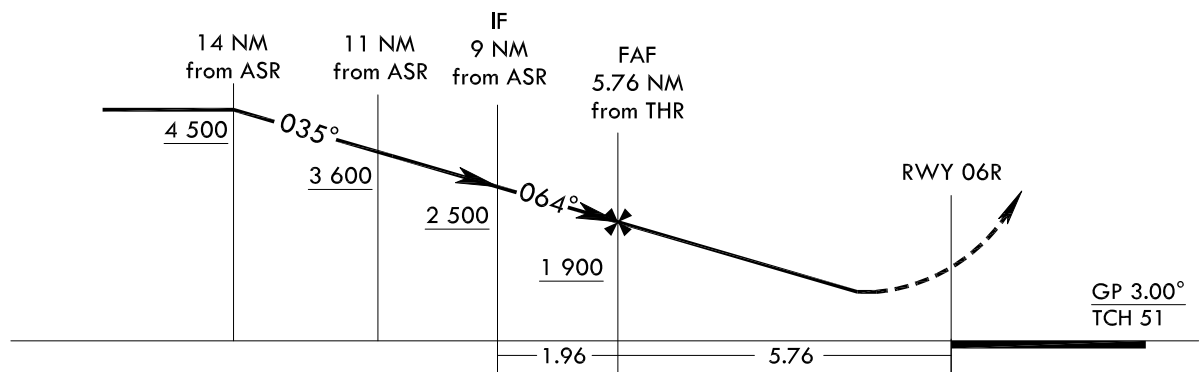


MISSED APPROACH

Climb HDG 064° to 4 400 ft, then expect radar vector by ATC.

TRANSITION ALT 14 000
TRANSITION LVL FL 140

4 400
↑
HDG 064°



CATEGORY	A	B	C	D	E
S-PAR 06R	219/30 200(200-5/8)				

Change : New procedure.

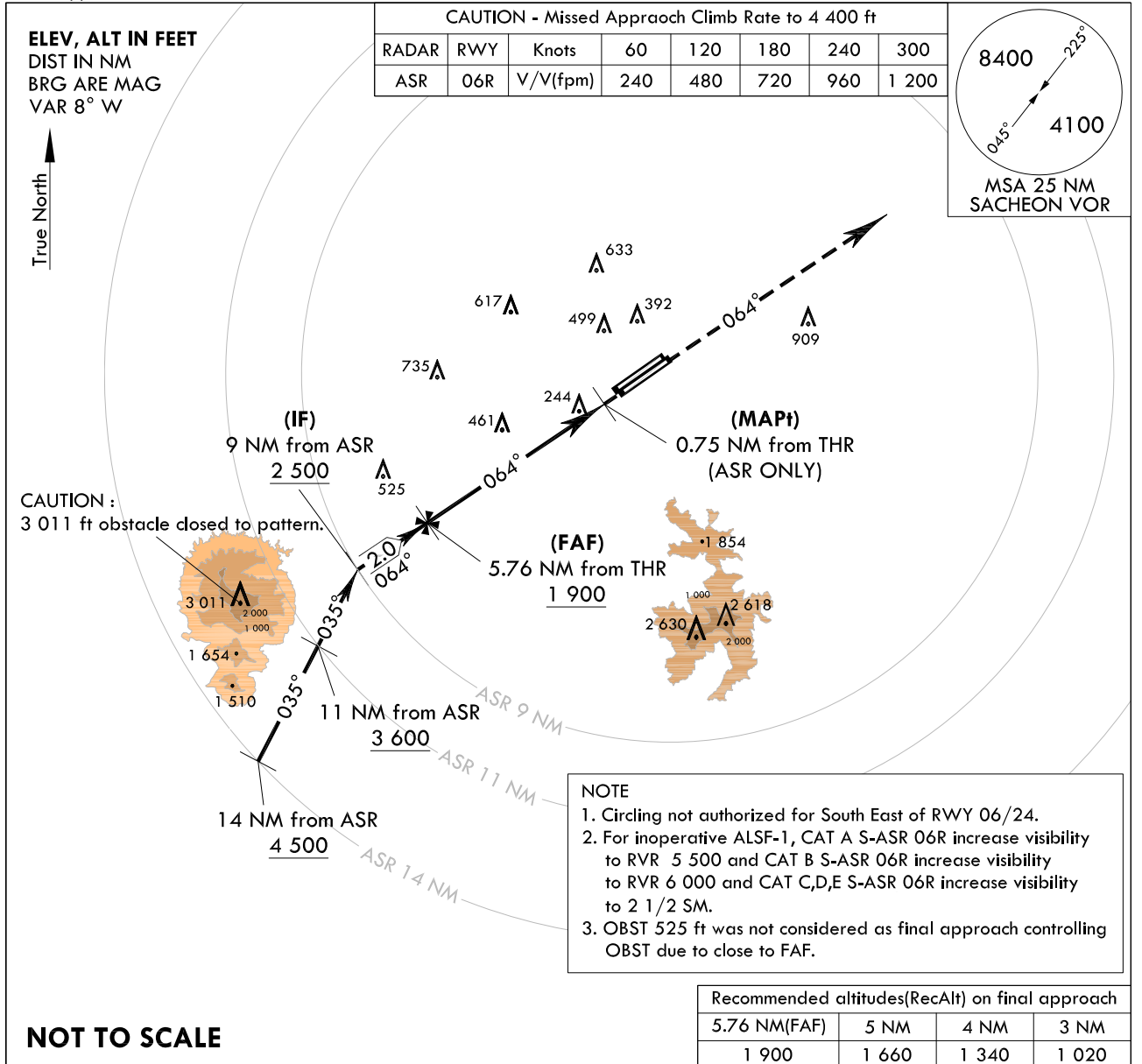
INTENTIONALLY

LEFT

BLANK

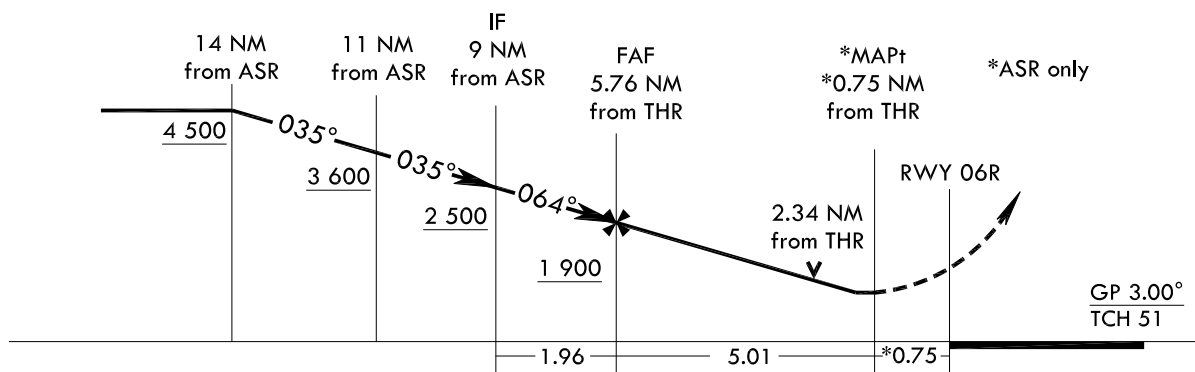
INSTRUMENT
APPROACH
CHARTAERODROME ELEV 25 ft
HEIGHTS RELATED TO
THR RWY 06R - ELEV 16 ft
HIGHEST ELEV TDZ 19 ftSACHEON APP 135.4 344.7
SACHEON TWR 118.675 236.6
305.4SACHEON/Sacheon(RKPS)
ASR
RWY 06R

Note : Approach and circle to land under U.S. TERPS.



MISSED APPROACH

Climb HDG 064° to 4 400 ft, then expect radar vector by ATC.

TRANSITION ALT 14 000
TRANSITION LVL FL 1404 400
↑
HDG 064°

CATEGORY	A	B	C	D	E
S-ASR 06R	820/45	801(800-7/8)	820-1 7/8	801(800-1 7/8)	
CIRCLING	820-1 795(800-1)	900-1 1/4 875(900-1 1/4)	1 020-3 995(1 000-3)	1 120-3 1 095(1 100-3)	

Change : Information of OBST, WX minima for circling CAT C, D and Establishment of VDP.

INTENTIONALLY

LEFT

BLANK

**INSTRUMENT
APPROACH
CHART**

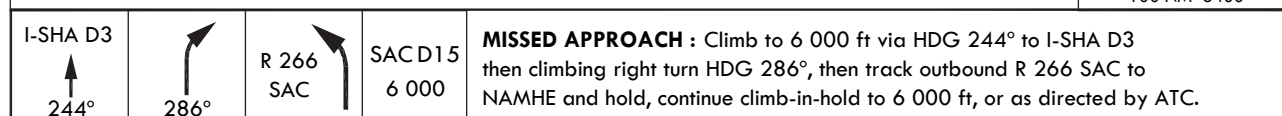
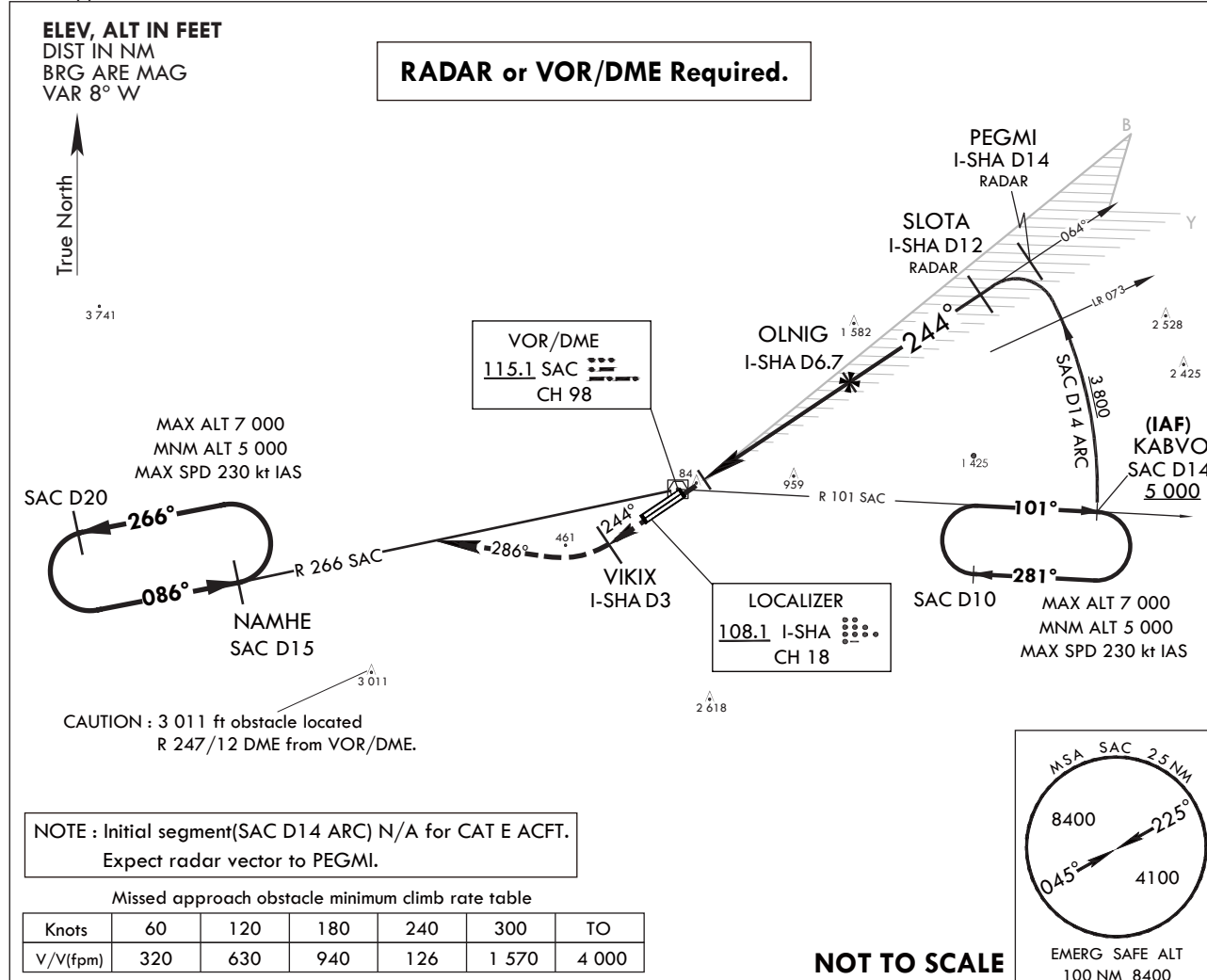
AERODROME ELEV 25 ft
HEIGHTS RELATED TO
THR RWY 24R - ELEV 19 ft
HIGHEST ELEV TDZ 19 ft

SACHEON APP 135.4 344.7
SACHEON TWR 118.675 236.6
305.4

SACHEON/Sacheon(RKPS)

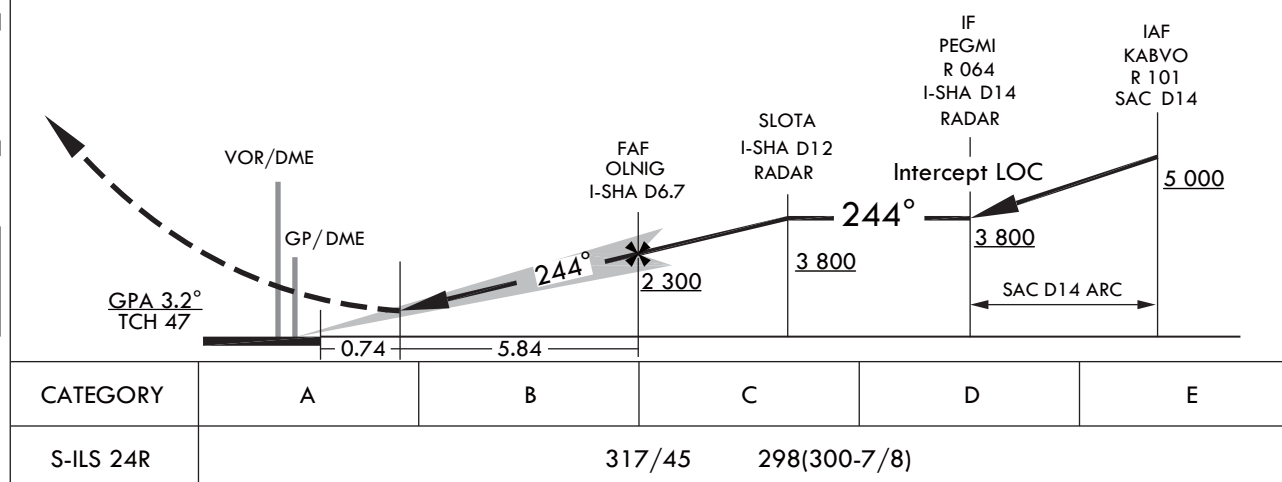
**ILS
RWY 24R**

Note : Approach and circle to land under U.S. TERPS.



* VGSI and descent angles not coincident(VGSI 3.2°/TCH 56).
** Use I-SHA DME when on the localizer course.

TRANSITION ALT 14 000
TRANSITION LVL FL 140



Change : Information of glide slope and Establishment of note, IF, FAF.

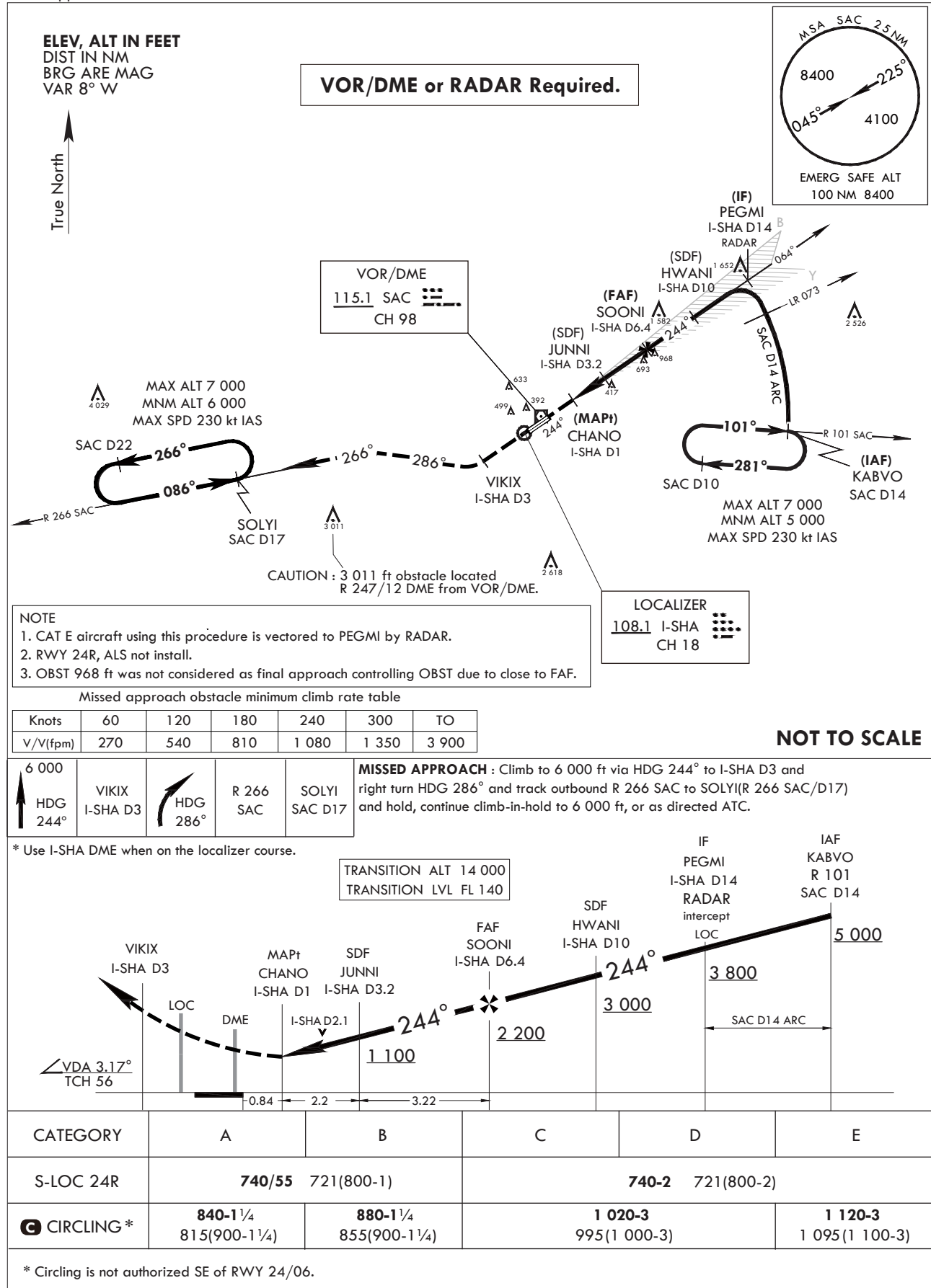
INTENTIONALLY

LEFT

BLANK

INSTRUMENT
APPROACH
CHARTAERODROME ELEV 25 ft
HEIGHTS RELATED TO
THR RWY 24R - ELEV 19 ft
HIGHEST ELEV TDZ 19 ftSACHEON APP 135.4 344.7
SACHEON TWR 118.675 236.6
305.4SACHEON/Sacheon(RKPS)
LOC
RWY 24R

Note : Approach and circle to land under U.S. TERPS.



Change : Information of OBST and WX minima for circling CAT C.

OFFICE OF CIVIL AVIATION

AIRAC AIP AMDT 10/24
Effective : 1600UTC 27 NOV 2024

INTENTIONALLY

LEFT

BLANK

**INSTRUMENT
APPROACH
CHART**

AERODROME ELEV 25 ft
HEIGHTS RELATED TO
THR RWY 24R - ELEV 19 ft
HIGHEST ELEV TDZ 19 ft

SACHEON APP 135.4 344.7
SACHEON TWR 118.675 236.6
305.4

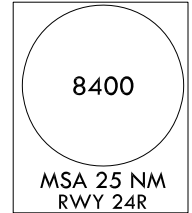
SACHEON/Sacheon(RKPS)
RNP
RWY 24R

Note : Approach and circle to land under U.S. TERPS.

ELEV, ALT IN FEET
DIST IN NM
BRG ARE MAG
VAR 8° W

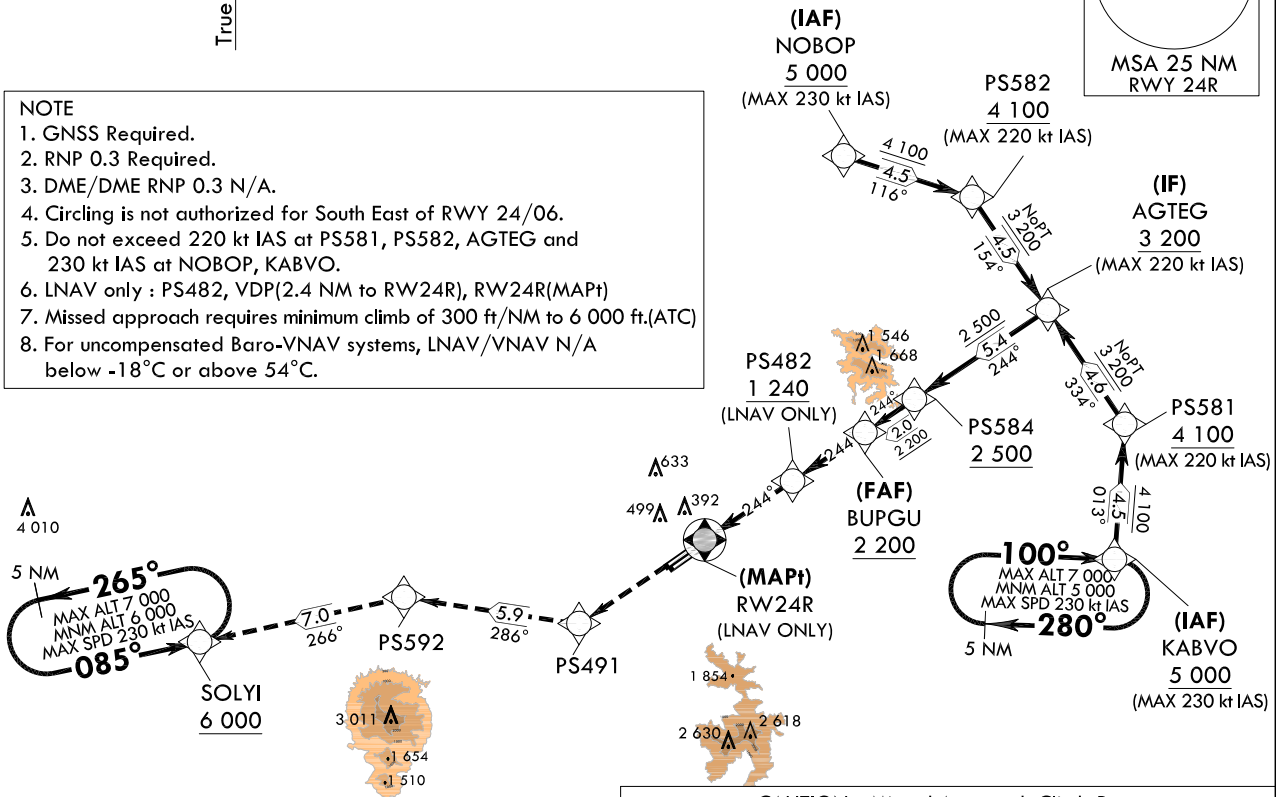


RNP APCH



NOTE

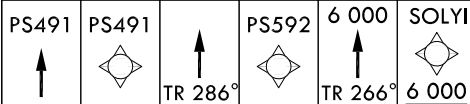
- GNSS Required.
- RNP 0.3 Required.
- DME/DME RNP 0.3 N/A.
- Circling is not authorized for South East of RWY 24/06.
- Do not exceed 220 kt IAS at PS581, PS582, AGTEG and 230 kt IAS at NOBOP, KABVO.
- LNAV only : PS482, VDP(2.4 NM to RW24R), RW24R(MAPt)
- Missed approach requires minimum climb of 300 ft/NM to 6 000 ft.(ATC)
- For uncompensated Baro-VNAV systems, LNAV/VNAV N/A below -18°C or above 54°C.



NOT TO SCALE

CAUTION - Missed Approach Climb Rate

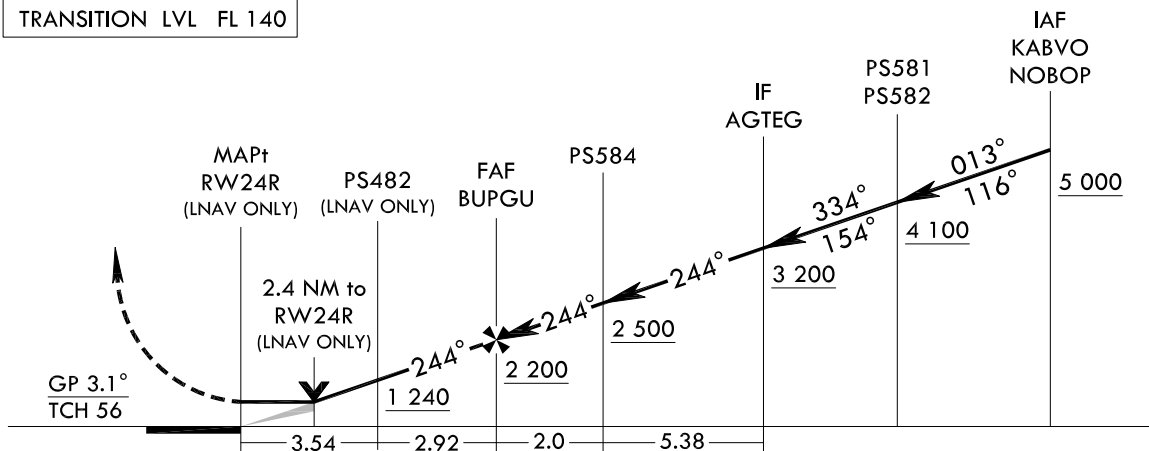
RWY	Knots	60	120	180	240	TO
24R	V/V(fpm)	300	600	900	1 200	6 000



MISSED APPROACH

Climb to 6 000 ft on direct to PS491 and track 286° to PS592 and track 266° to SOLYI at 6 000 ft and hold.

TRANSITION ALT 14 000
TRANSITION LVL FL 140



CATEGORY	A	B	C	D
S-LNAV/VNAV DA		783-2 1/2	764(800-2 1/2)	
S-LNAV MDA		880-2 1/2	861(900-2 1/2)	
CIRCLING	880-2 1/2	855(900-2 1/2)	1 020-3	995(1 000-3)

Change : Page control.

AERONAUTICAL DATA TABULATION

Instrument Approach Procedure Coding Tables

RNP RWY 24R - via KABVO to AGTEG(IF)

Serial Number	Path Descriptor	Waypoint Identifier	Fly- over	Course/ Track M(°T)	Distance (NM)	Turn direction	Altitude (ft)	Speed (kt)	Coordinates	VPA/ TCH	Navigation specification	Remarks
001	IF	KABVO	-	-	-	-	+5 000	-230	35°05'13.6"N 128°21'37.6"E	-	RNP APCH	-
002	TF	PS581	-	013(004.1)	4.5	-	+4 100	-220	35°09'44.5"N 128°22'01.4"E	-	RNP APCH	-
003	TF	AGTEG	-	334(325.8)	4.6	-	+3 200	-220	35°13'35.2"N 128°18'50.1"E	-	RNP APCH	NoPT

RNP RWY 24R - via NOBOP to AGTEG(IF)

Serial Number	Path Descriptor	Waypoint Identifier	Fly- over	Course/ Track M(°T)	Distance (NM)	Turn direction	Altitude (ft)	Speed (kt)	Coordinates	VPA/ TCH	Navigation specification	Remarks
001	IF	NOBOP	-	-	-	-	+5 000	-230	35°18'40.4"N 128°10'27.3"E	-	RNP APCH	-
002	TF	PS582	-	116(107.3)	4.5	-	+4 100	-220	35°17'19.6"N 128°15'43.6"E	-	RNP APCH	-
003	TF	AGTEG	-	154(145.7)	4.5	-	+3 200	-220	35°13'35.2"N 128°18'50.1"E	-	RNP APCH	NoPT

RNP RWY 24R - via AGTEG(IF) to MAHF

Serial Number	Path Descriptor	Waypoint Identifier	Fly- over	Course/ Track M(°T)	Distance (NM)	Turn direction	Altitude (ft)	Speed (kt)	Coordinates	VPA/ TCH	Navigation specification	Remarks
001	TF	AGTEG	-	-	-	-	+3 200	-220	35°13'35.2"N 128°18'50.1"E	-	RNP APCH	IF
002	TF	PS584	-	244(235.7)	5.4	-	+2 500	-	35°10'33.1"N 128°13'24.9"E	-	RNP APCH	-
003	TF	BUPGU	-	244(235.7)	2.0	-	+2 200	-	35°09'25.3"N 128°11'23.95"E	-3.1/56	RNP APCH	FAF
004	TF	PS482	-	244(235.7)	2.9	-	+1 240	-	35°07'46.4"N 128°08'27.8"E	-	RNP APCH	LNAV ONLY
005	DF	RW24R	Y	244(235.6)	3.5	-	-	-	35°05'46.3"N 128°04'54.2"E	-	RNP APCH	MAPt LNAV ONLY
006	TF	PS491	-	244(235.6)	5.05	-	-	-	35°02'54.6"N 127°59'49.5"E	-	RNP APCH	-
007	TF	PS592	-	286(278.0)	5.9	-	-	-	35°03'43.9"N 127°52'40.1"E	-	-	-
008	TF	SOLYI	-	266(257.1)	7.0	-	+6 000	-	35°02'09.4"N 127°44'21.6"E	-	RNP APCH	-

HOLDING PROCEDURE

Holding Identification	Path Descriptor	Waypoint Identifier	Fly- over	Course/ Track M(°T)	Distance (NM)	Turn direction	Altitude (ft)	Speed (kt)	Coordinates	VPA/ TCH	Navigation specification	Remarks
RNP RWY 24R	HM	KABVO	-	100(091.6)	5.0	R	-7 000 +5 000	-230	35°05'13.6"N 128°21'37.6"E	-	RNAV 1	-
	HM	SOLYI	-	085(076.6)	5.0	L	-7 000 +6 000	-230	35°02'09.4"N 127°44'21.6"E	-	RNAV 1	-

**INSTRUMENT
APPROACH
CHART**

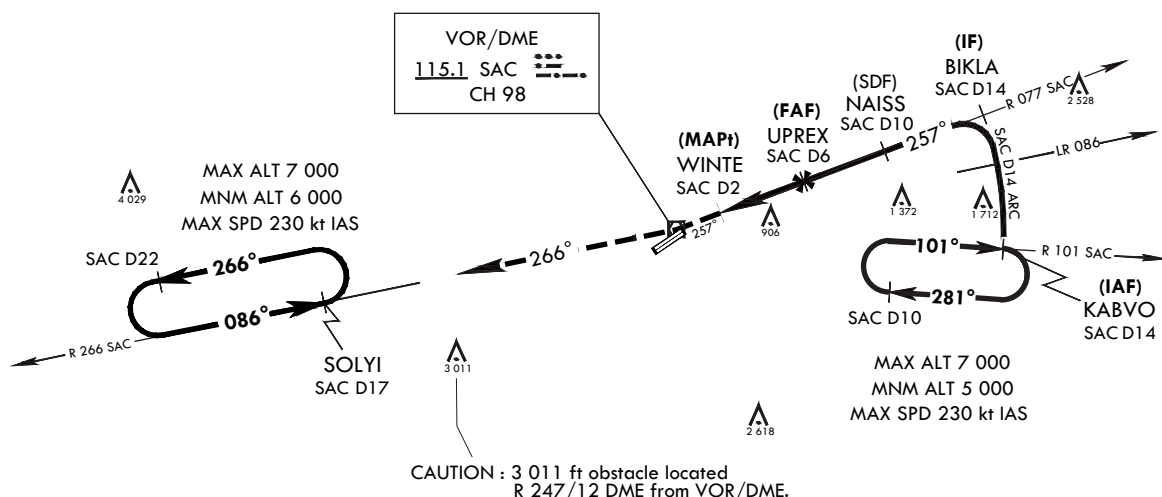
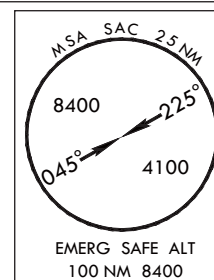
AERODROME ELEV 25 ft
HEIGHTS RELATED TO
THR RWY 24R - ELEV 19 ft
HIGHEST ELEV TDZ 19 ft

SACHEON APP 135.4 344.7
SACHEON TWR 118.675 236.6
305.4

SACHEON/Sacheon(RKPS)
VOR
RWY 24R

Note : Approach and circle to land under U.S. TERPS.

ELEV, ALT IN FEET
DIST IN NM
BRG ARE MAG
VAR 8° W



NOTE : RWY 24R, ALS not install.

Missed approach obstacle minimum climb rate table

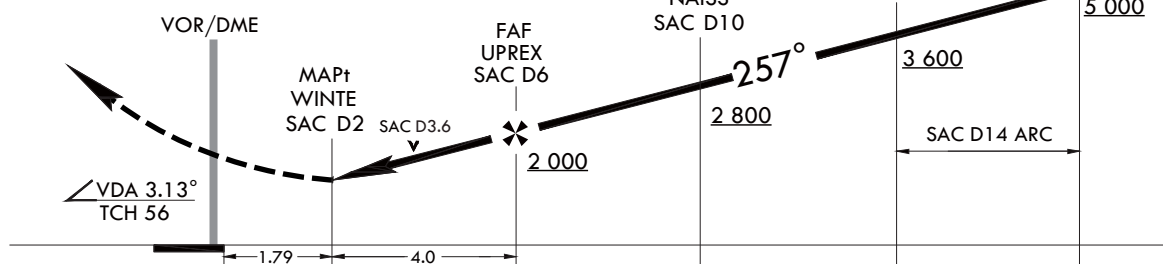
Knots	60	120	180	240	300	TO
V/V(fpm)	210	420	630	830	1 040	4 000

NOT TO SCALE



MISSED APPROACH : Climb to 6 000 ft via HDG 257° to SAC then track outbound R 266 SAC to SOLYI(R 266 SAC/D17) and hold, continue climb-in-hold to 6 000 ft.

TRANSITION ALT 14 000
TRANSITION LVL FL 140



CATEGORY	A	B	C	D
S-VOR 24R	1 220-2 1/8	1 201(1 200-2 1/8)	1 220-3	1 201(1 200-3)
CIRCLING *	1 220-2 1/8	1 195(1 200-2 1/8)	1 220-3	1 195(1 200-3)

* Circling is not authorized SE of RWY 24/06.

INTENTIONALLY

LEFT

BLANK

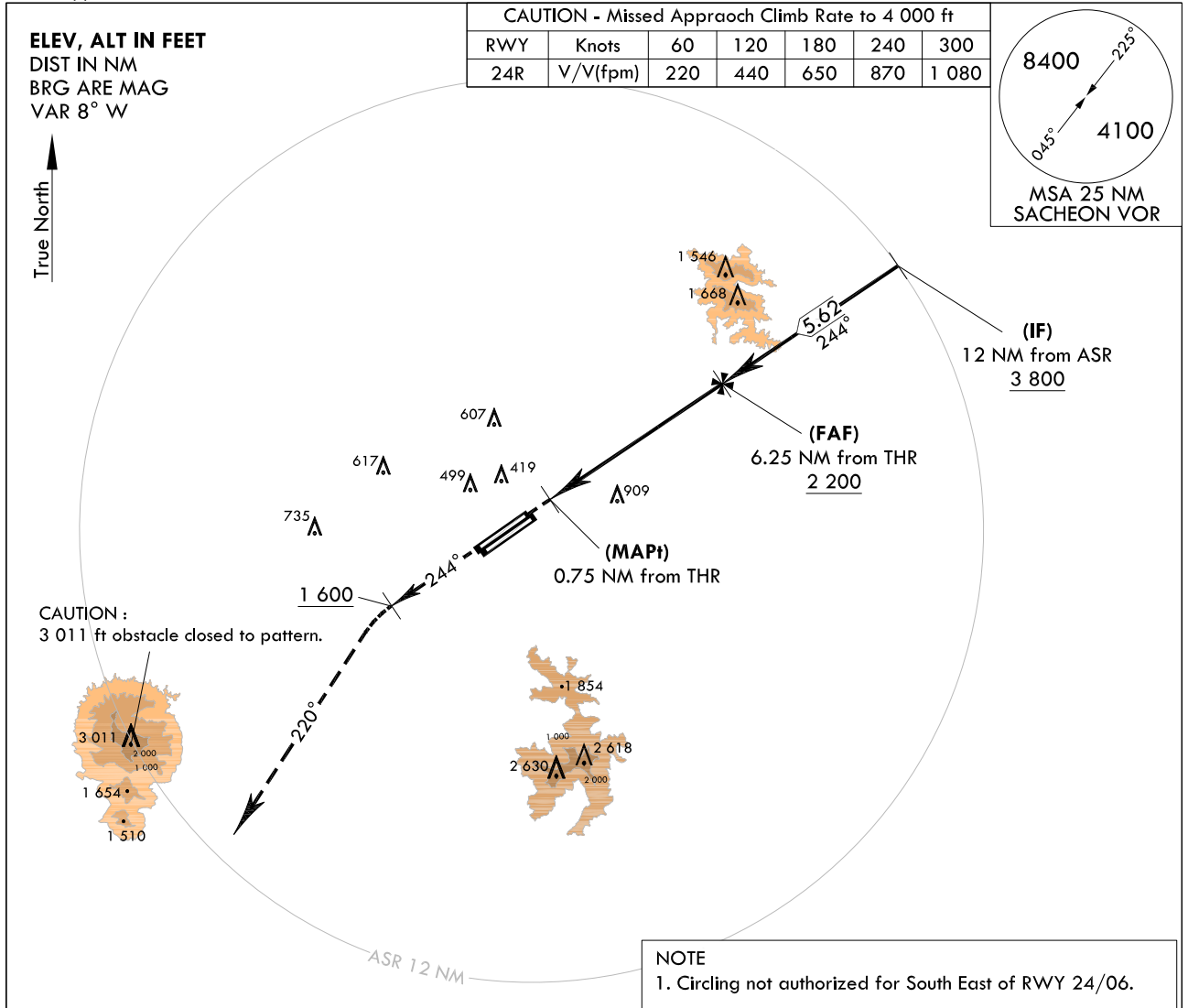
**INSTRUMENT
APPROACH
CHART**

AERODROME ELEV 25 ft
HEIGHTS RELATED TO
THR RWY 24R - ELEV 19 ft
HIGHEST ELEV TDZ 19 ft

SACHEON APP 135.4 344.7
SACHEON TWR 118.675 236.6
305.4

SACHEON/Sacheon(RKPS)
ASR
RWY 24R

Note : Approach and circle to land under U.S. TERPS.



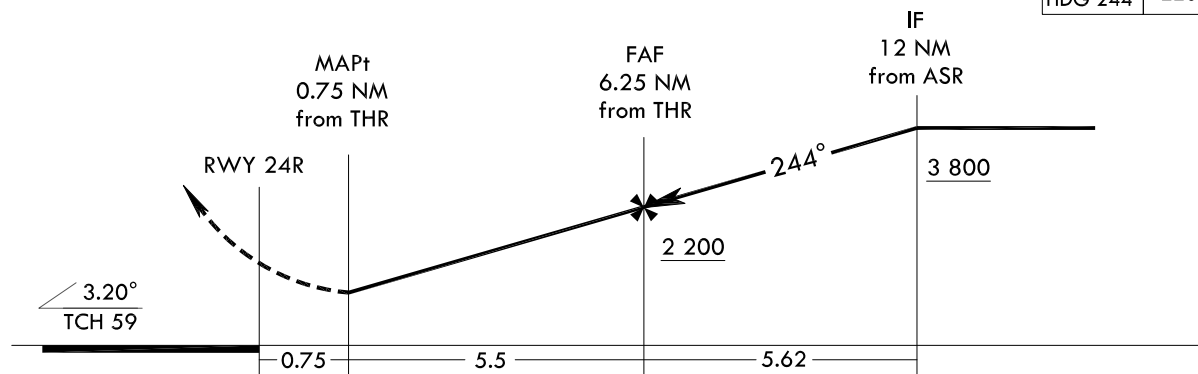
NOT TO SCALE


MISSED APPROACH

Climb HDG 244° to 1 600 ft and turn left HDG 220° to 4 500 ft, then expect radar vector by ATC.

TRANSITION ALT 14 000
TRANSITION LVL FL 140

1 600
4 500
↑
HDG 244°
HDG 220°



CATEGORY	A	B	C	D	E
S-ASR 24R	1 220/60 1 201(1 200-1 1/4)	1 220-1 1/2 1 201(1 200-1 1/2)	1 220-3	1 201(1 200-3)	
 CIRCLING	1 220-1 1/4 1 195(1 200-1 1/4)	1 220-1 1/2 1 195(1 200-1 1/2)	1 220-3	1 195(1 200-3)	

Change : New procedure.

INTENTIONALLY

LEFT

BLANK

**INSTRUMENT
APPROACH
CHART**

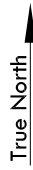
AERODROME ELEV 25 ft
HEIGHTS RELATED TO
THR RWY 24L - ELEV **24** ft
HIGHEST ELEV TDZ **24** ft

SACHEON APP 135.4 344.7
SACHEON TWR 118.675 236.6
305.4

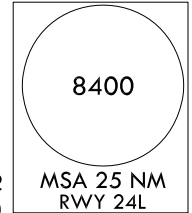
SACHEON/Sacheon(RKPS)
RNP
RWY 24L

Note : Approach and circle to land under U.S. TERPS.

ELEV, ALT IN FEET
DIST IN NM
BRG ARE MAG
VAR 8° W

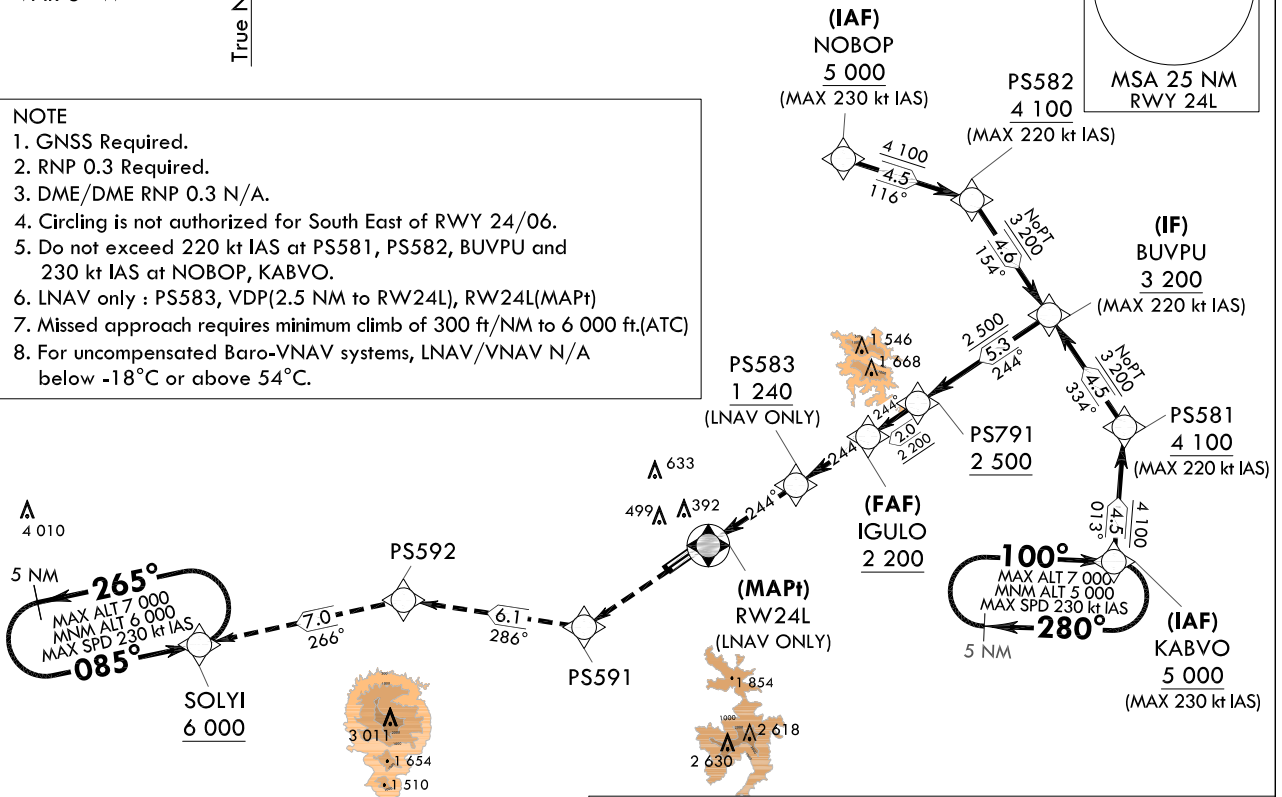


RNP APCH



NOTE

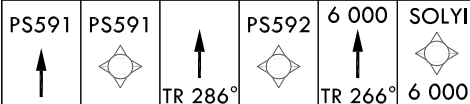
- GNSS Required.
- RNP 0.3 Required.
- DME/DME RNP 0.3 N/A.
- Circling is not authorized for South East of RWY 24/06.
- Do not exceed 220 kt IAS at PS581, PS582, BUVPU and 230 kt IAS at NOBOP, KABVO.
- RNAV only : PS583, VDP(2.5 NM to RW24L), RW24L(MAPt)
- Missed approach requires minimum climb of 300 ft/NM to 6 000 ft.(ATC)
- For uncompensated Baro-VNAV systems, RNAV/VNAV N/A below -18°C or above 54°C.



NOT TO SCALE

CAUTION - Missed Approach Climb Rate

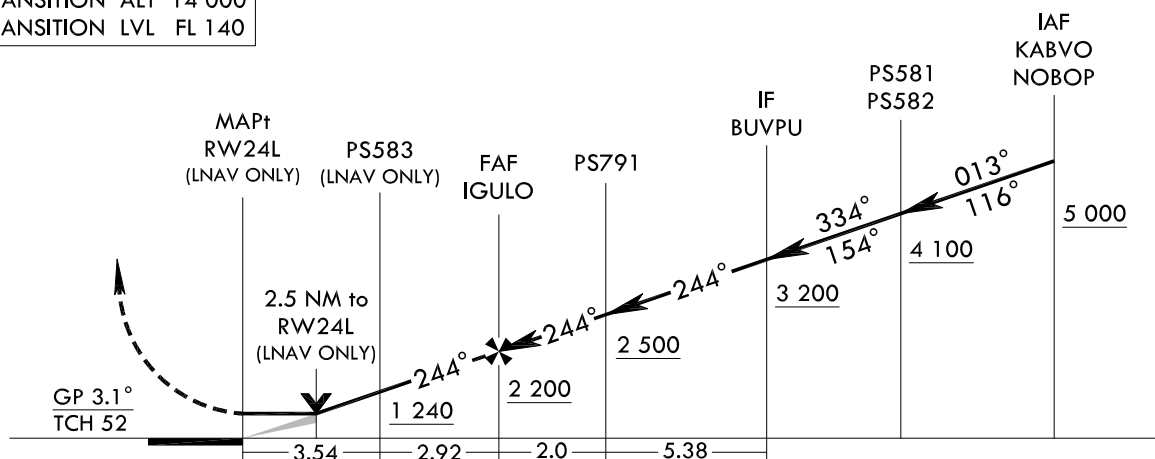
RWY	Knots	60	120	180	240	TO
24L	V/V(fpm)	300	600	900	1 200	6 000



MISSED APPROACH

Climb to 6 000 ft on direct to PS591 and track 286° to PS592 and track 266° to SOLYI at 6 000 ft and hold.

TRANSITION ALT 14 000
TRANSITION LVL FL 140



CATEGORY	A	B	C	D
S-LNAV/VNAV DA		781-2 1/2	757(800-2 1/2)	
S-LNAV MDA		880-2 1/2	856(900-2 1/2)	
CIRCLING	880-2 1/2	855(900-2 1/2)	1 020-3	995(1 000-3)

Change : Information of DIST for PS592(5.9 → 6.1).

SACHEON/Sacheon(RKPS)
RNP RWY 24L

AERONAUTICAL DATA TABULATION

Instrument Approach Procedure Coding Tables

RNP RWY 24L - via KABVO to BUVPUI(IF)

Serial Number	Path Descriptor	Waypoint Identifier	Fly-over	Course/Track M(°T)	Distance (NM)	Turn direction	Altitude (ft)	Speed (kt)	Coordinates	VPA/TCH	Navigation specification	Remarks
001	IF	KABVO	-	-	-	-	+5 000	-230	35°05'13.6" N 128°21'37.6" E	-	RNP APCH	-
002	TF	PS581	-	013(004.1)	4.5	-	+4 100	-220	35°09'44.5" N 128°22'01.4" E	-	RNP APCH	-
003	TF	BUVPUI	-	334(325.8)	4.5	-	+3 200	-220	35°13'29.0" N 128°18'55.2" E	-	RNP APCH	NoPT

RNP RWY 24L - via NOBOP to BUVPUI(IF)

Serial Number	Path Descriptor	Waypoint Identifier	Fly-over	Course/Track M(°T)	Distance (NM)	Turn direction	Altitude (ft)	Speed (kt)	Coordinates	VPA/TCH	Navigation specification	Remarks
001	IF	NOBOP	-	-	-	-	+5 000	-230	35°18'40.4" N 128°10'27.3" E	-	RNP APCH	-
002	TF	PS582	-	116(107.3)	4.5	-	+4 100	-220	35°17'19.6" N 128°15'43.6" E	-	RNP APCH	-
003	TF	BUVPUI	-	154(145.7)	4.6	-	+3 200	-220	35°13'29.0" N 128°18'55.2" E	-	RNP APCH	NoPT

RNP RWY 24L - via BUVPUI(IF) to MAHF

Serial Number	Path Descriptor	Waypoint Identifier	Fly-over	Course/Track M(°T)	Distance (NM)	Turn direction	Altitude (ft)	Speed (kt)	Coordinates	VPA/TCH	Navigation specification	Remarks
001	TF	BUVPUI	-	-	-	-	+3 200	-220	35°13'29.0" N 128°18'55.2" E	-	RNP APCH	IF
002	TF	PS791	-	244(235.7)	5.3	-	+2 500	-	35°10'29.6" N 128°13'34.8" E	-	RNP APCH	-
003	TF	IGULO	-	244(235.7)	2.0	-	+2 200	-	35°09'21.8" N 128°11'33.8" E	-3.1/52	RNP APCH	FAF
004	TF	PS583	-	244(235.7)	2.9	-	+1 240	-	35°07'43.0" N 128°08'37.8" E	-	RNP APCH	LNAV ONLY
005	DF	RW24L	Y	244(235.6)	3.5	-	-	-	35°05'42.9" N 128°05'04.2" E	-	RNP APCH	MAPt LNAV ONLY
006	TF	PS591	-	-	-	-	-	-	35°02'53.1" N 128°00'02.8" E	-	RNP APCH	-
007	TF	PS592	-	286(278.0)	6.1	-	-	-	35°03'43.9" N 127°52'40.1" E	-	-	-
008	TF	SOLYI	-	266(257.1)	7.0	-	+6 000	-	35°02'09.4" N 127°44'21.6" E	-	RNP APCH	-

HOLDING PROCEDURE

Holding Identification	Path Descriptor	Waypoint Identifier	Fly-over	Course/Track M(°T)	Distance (NM)	Turn direction	Altitude (ft)	Speed (kt)	Coordinates	VPA/TCH	Navigation specification	Remarks
RNP RWY 24L	HM	KABVO	-	100(091.6)	5.0	R	-7 000 +5 000	-230	35°05'13.6" N 128°21'37.6" E	-	RNAV 1	-
	HM	SOLYI	-	085(076.6)	5.0	L	-7 000 +6 000	-230	35°02'09.4" N 127°44'21.6" E	-	RNAV 1	-

**INSTRUMENT
APPROACH
CHART**

AERODROME ELEV 25 ft
HEIGHTS RELATED TO
THR RWY 24L - ELEV 24 ft
HIGHEST ELEV TDZ 24 ft

SACHEON APP 135.4 344.7
SACHEON TWR 118.675 236.6
305.4

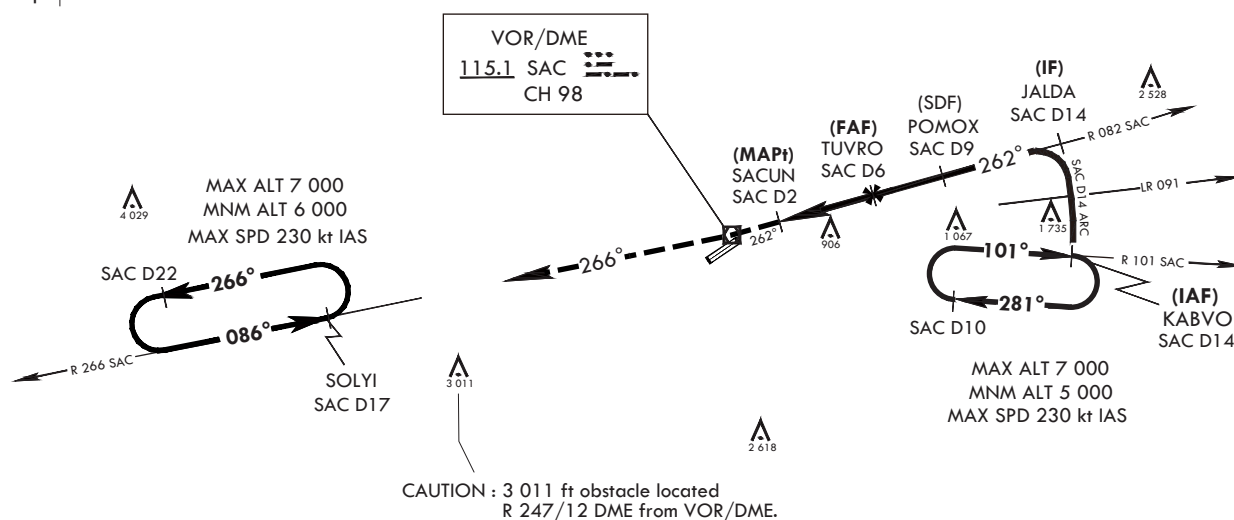
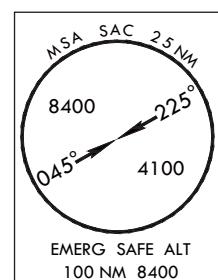
SACHEON/Sacheon(RKPS)

**VOR
RWY 24L**

Note : Approach and circle to land under U.S. TERPS.

ELEV, ALT IN FEET
DIST IN NM
BRG ARE MAG
VAR 8° W

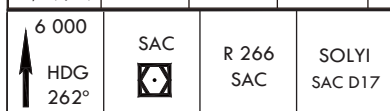
True North



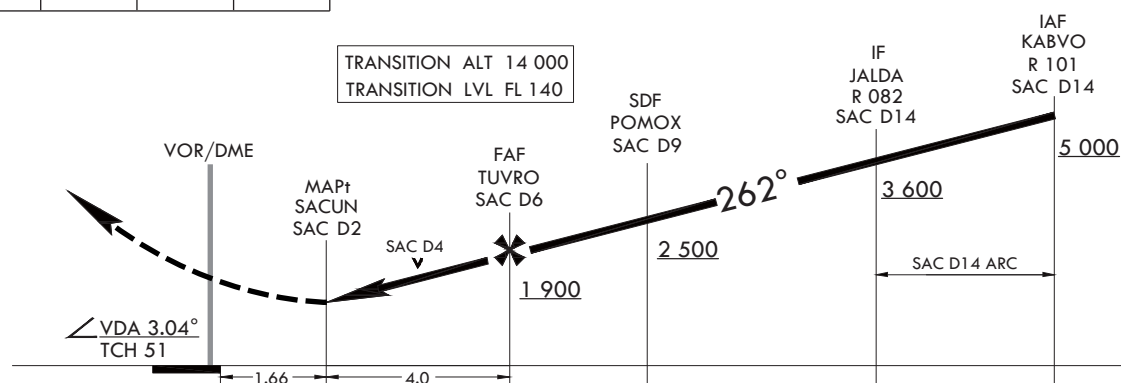
Missed approach obstacle minimum climb rate table

Knots	60	120	180	240	30	TO
V/V(fpm)	210	420	630	830	1 040	4 000

NOT TO SCALE



MISSED APPROACH : Climb to 6 000 ft via HDG 262° to SAC then track outbound R 266 SAC to SOLYI(R 266 SAC/D17) and hold, continue climb-in-hold to 6 000 ft.



CATEGORY	A	B	C	D
S-VOR 24L	1 220-2	1 196(1 200-2)	1 220-3	1 196(1 200-3)
CIRCLING *	1 220-2	1 195(1 200-2)	1 220-3	1 195(1 200-3)

* Circling is not authorized SE of RWY 24/06.

Change : Information of procedure name(VOR/DME → VOR).

INTENTIONALLY

LEFT

BLANK

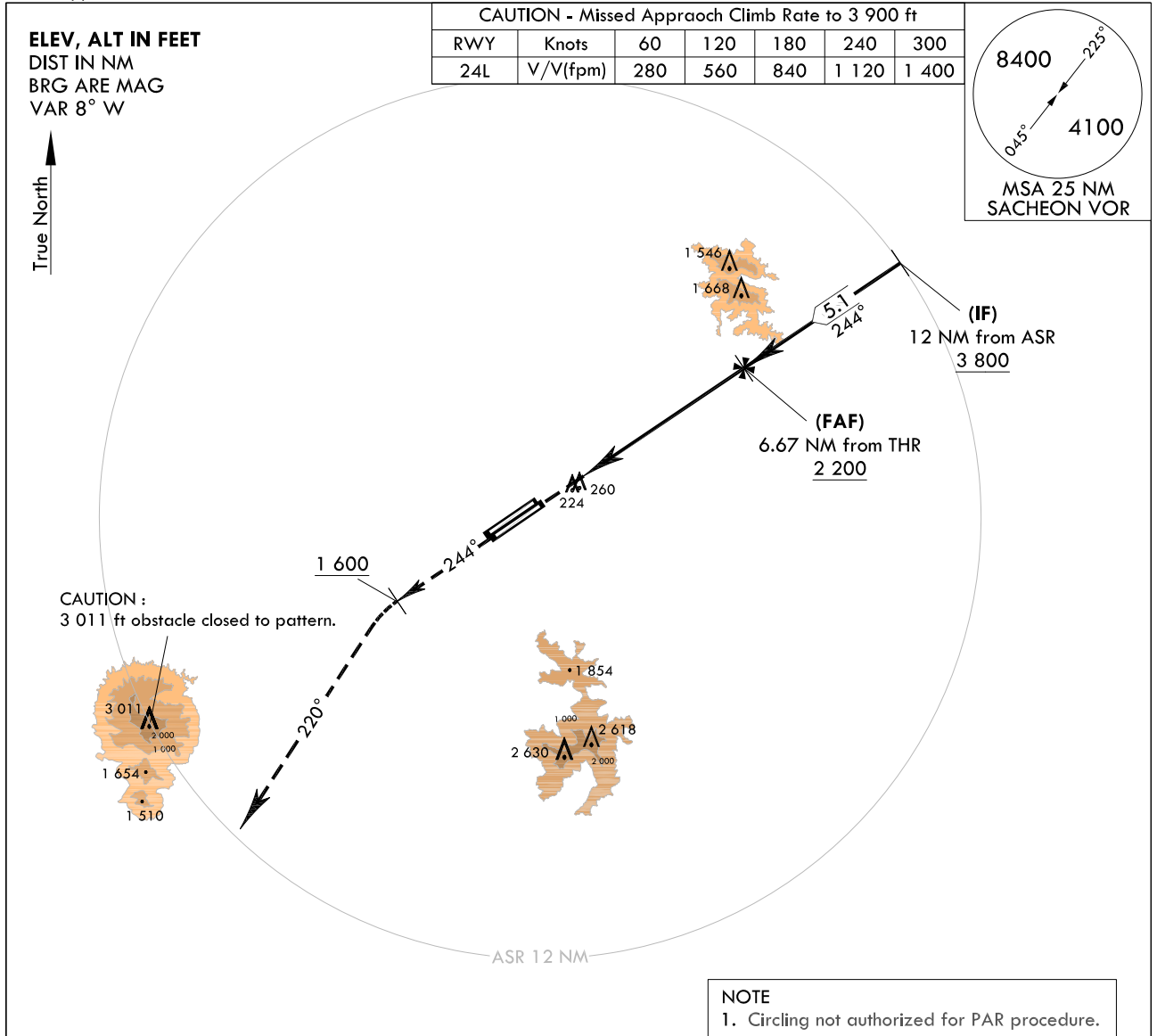
**INSTRUMENT
APPROACH
CHART**

AERODROME ELEV 25 ft
HEIGHTS RELATED TO
THR RWY 24L - ELEV **24** ft
HIGHEST ELEV TDZ **24** ft

SACHEON APP 135.4 344.7
SACHEON TWR 118.675 236.6
305.4

SACHEON/Sacheon(RKPS)
PAR
RWY 24L

Note : Approach and circle to land under U.S. TERPS.



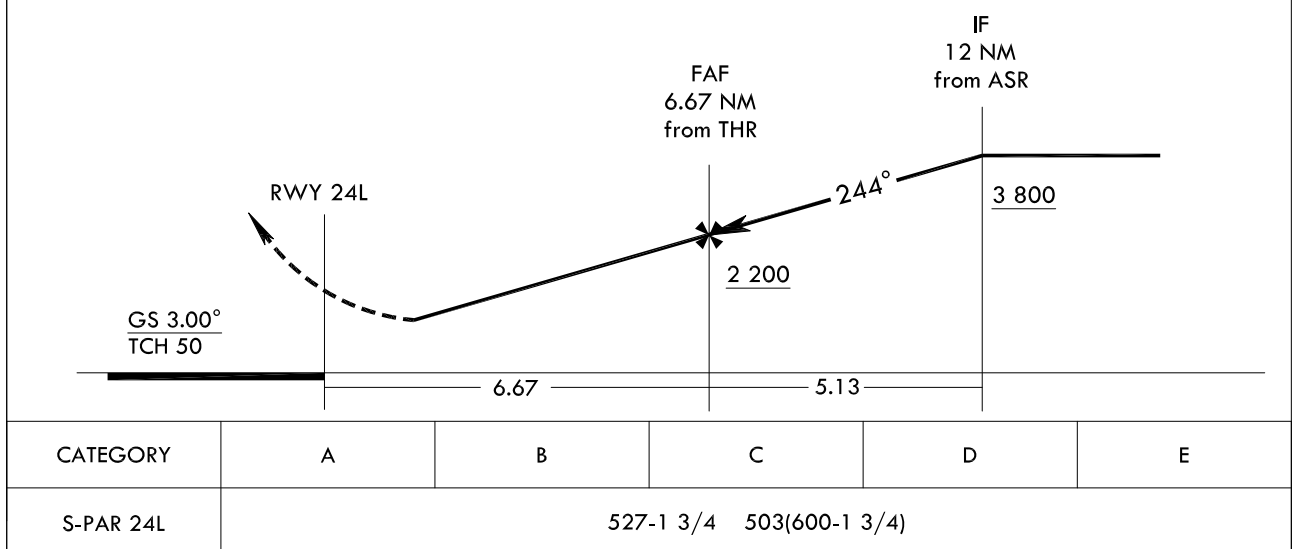
NOT TO SCALE

MISSED APPROACH

Climb HDG 244° to 1 600 ft and turn left HDG 220° to 4 500 ft, then expect radar vector by ATC.

TRANSITION ALT 14 000
TRANSITION LVL FL 140

1 600
↑
HDG 244°
4 500
↻
HDG 220°



Change : New procedure.

INTENTIONALLY

LEFT

BLANK

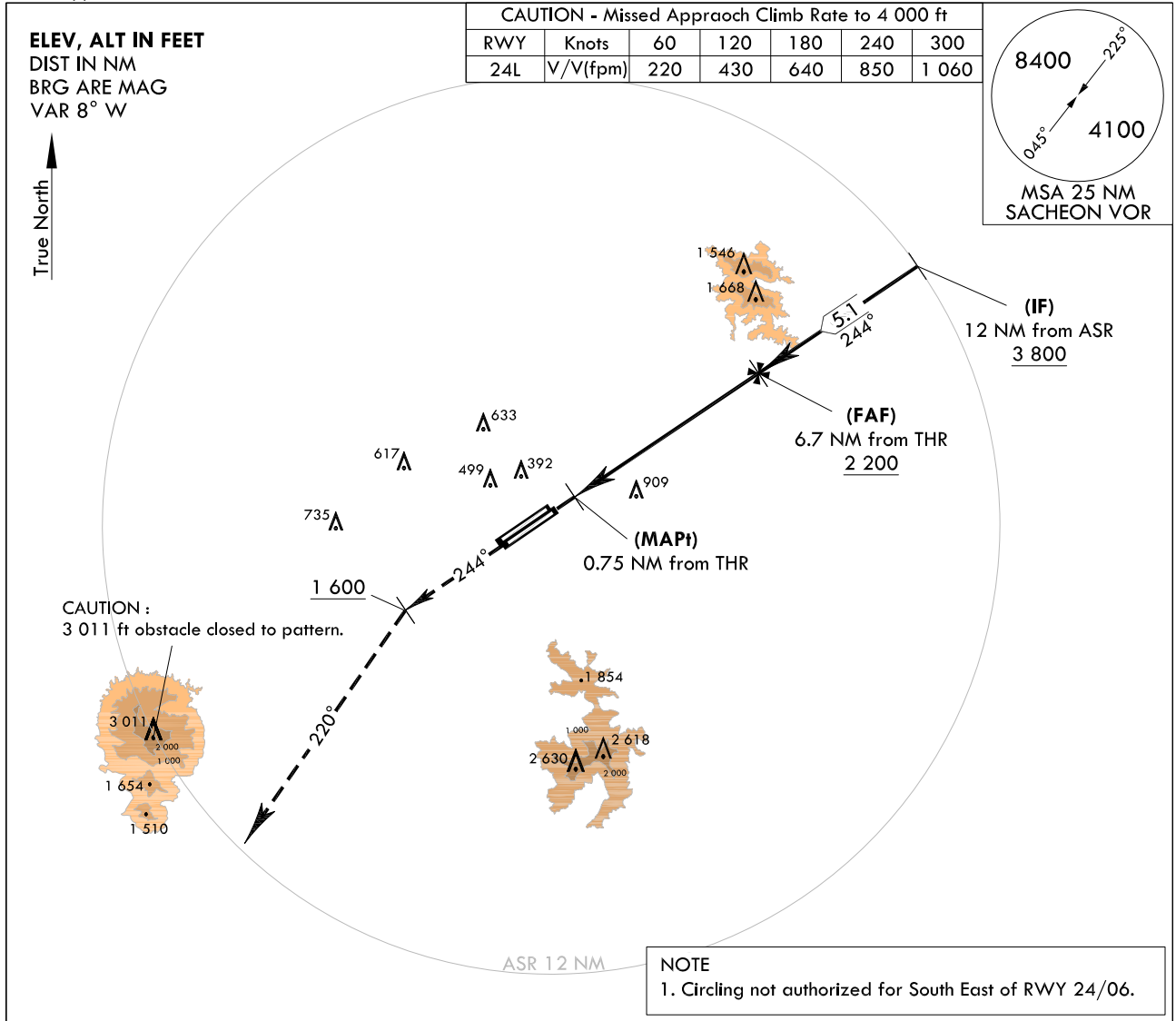
**INSTRUMENT
APPROACH
CHART**

AERODROME ELEV 25 ft
HEIGHTS RELATED TO
THR RWY 24L - ELEV **24** ft
HIGHEST ELEV TDZ **24** ft

SACHEON APP 135.4 344.7
SACHEON TWR 118.675 236.6
305.4

SACHEON/Sacheon(RKPS)
ASR
RWY 24L

Note : Approach and circle to land under U.S. TERPS.

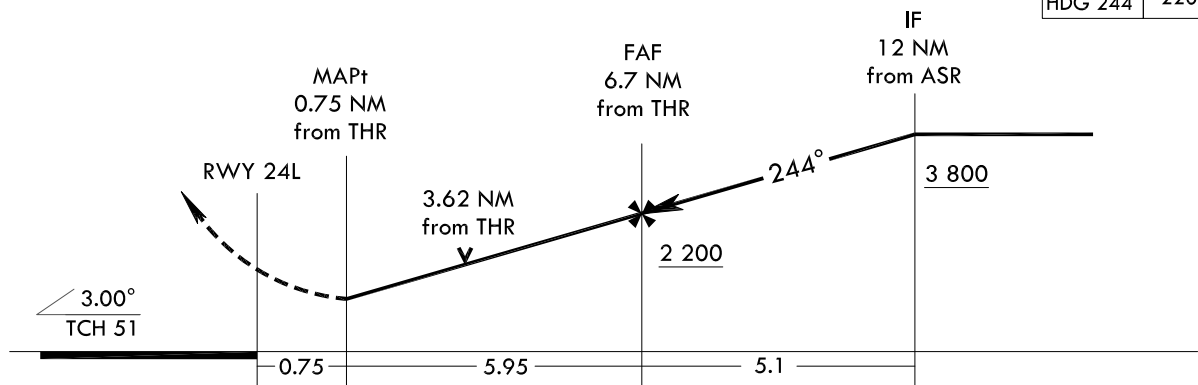


NOT TO SCALE

MISSED APPROACH

Climb HDG 244° to 1 600 ft, then turn left HDG 220° to 4 500 ft, then expect radar vector by ATC.

TRANSITION ALT 14 000
TRANSITION LVL FL 140



CATEGORY	A	B	C	D	E
S-ASR 24L	1 240/55 1 216(1 300-1)	1 240/60 1 216(1 300-1 1/4)	1 240-3	1 216(1 300-3)	
CIRCLING	1 240-1 1/4 1 215(1 300-1 1/4)	1 240-1 1/2 1 215(1 300-1 1/2)	1 240-3	1 215(1 300-3)	

Change : Information of OBST and Establishment of VDP.

INTENTIONALLY

LEFT

BLANK